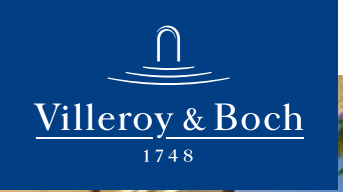




LOVE THE
MOMENT



HOT TUBS *FOR YOUR HOME*

— *A new class of hot tubs* —

villeroy-boch.com

9300077 - 2021 Printed in Germany
Variations in colour and dimensions comply with the customary tolerances.
We reserve the right to make technical modifications to the range and alter colours.

More content

Visit us online too:
<https://villeroyboch.com/outdoorwhirlpools>



*An investment for the future:
 Advantages of Villeroy & Boch hot tubs*

- 02 Overview of content
- 04 Innovation: since 2005
- 05 Sustainable: green hot tubs
- 06 | 07 At home: sit back and relax
- 08 | 09 Unique: technology
- 10 Maintenance-free: cutting-edge design
- 11 Economical: energy efficiency



*Enhancing health for 2,000 years:
 The amazing effects of hot water*

- 12 | 13 Health & quality of life
- 14 | 17 Hydrotherapy



*Tailored individuality:
 Diverse product lines*

- 18 | 21 Design Line - Outstanding design
- 22 | 25 Premium Line - Luxury complete with all the fittings
- 26 | 27 Fitness Edition - Sport and wellness hot tubs
- 28 | 31 Comfort Line - Designed for comfort
- 32 | 35 X-Series - Quality at an entry-level price
- 36 | 37 Overview of all models



*Competence builds trust:
 Before and after purchase*

- 38 Practical accessories
- 40 | 41 Service & sales advice
- 42 | 43 Maintenance & care



PARTNER TIPS
 Look out for this symbol.
 It indicates useful tips and information
 to help you choose your hot tub.
 Find out more at:
villeroyboch.com/outdoorwhirlpools

Since 2005

— Outdoor hot tubs for your home —

Engineering and technology, design and workmanship - this is what really makes a high-quality product. Right from the start, Villeroy & Boch has developed a variety of innovative features for its 'new class of hot tubs'. Featuring stylish designs reflecting the latest trends, the outdoor hot tubs integrate harmoniously in modern living spaces.



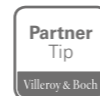
▶ Watch the video here: An outdoor hot tub for your home. The beneficial effects of water, JetPak technology with its therapy system, weatherproof construction and the excellent workmanship of Villeroy & Boch hot tubs.

UNIQUE JETPAK TECHNOLOGY
You can choose from up to 18 different JetPaks and click them into place at every seat in no time at all – for a wellness experience that is exactly tailored to everyone's needs.



IN OVER FORTY COUNTRIES:
Outdoor hot tubs from Villeroy & Boch – an innovative brand with a long tradition.

PARTNER TIPS
Look out for this symbol. It indicates useful tips and information to help you choose your hot tub.



STRONG PARTNERS & PROFESSIONAL SERVICE
Enjoy the confidence in a reliable brand and the assurance that comes from having the service and qualities of a strong partner at your side for many years to come.

Green hot tubs

— Environmentally friendly & economical —

- Our hot tubs are 100% wood-free - which means no maintenance.
- The hot tub is supported by a sealed tub, moulded from weatherproof ABS plastic.
- The framework consists of injection-moulded Z-profiles.
- The side panelling is made from a maintenance-free and UV-resistant plastic material.
- All hot tubs incorporate a high proportion of recycled plastics in their construction.
- Any excess plastic is recycled and reused.
- No harmful substances are released into the environment during production.
- The material used for the tub shell contains no glass fibres and no styrenes are emitted during production.
- Excellent quality standards make Villeroy & Boch hot tubs among the most energy-efficient on the market.
- All Villeroy & Boch models meet or even exceed the stringent energy efficiency guidelines of the California Energy Commission (CEC).
- Villeroy & Boch hot tubs are characterised by low operating costs and are among the most environmentally friendly on the planet.



Villeroy & Boch strives to ensure that all production processes for its hot tubs are environmentally friendly and sustainable. Each hot tub is constructed using energy-saving and environmentally friendly systems, materials and technologies.

Sit back and relax

*Wellness with
hydrotherapy*

There's no need to pack a case - simply take a break from everyday life with a hot tub in your own garden and enjoy the pampering and energising power of the bubbling water in the open air. A hot tub combines various essential features for the perfect wellness experience: the warm water gently caresses your body, making it feel almost weightless. Tension melts away and your mind becomes calm. The pleasant hydromassage relaxes muscles and releases tension. And the natural outdoor setting and fresh air have an energising effect.



What is a JetPak?



JetPaks are removable massage units that can be positioned as desired, making them perfect for any kind of massage. As these elements can be configured individually, you can combine your preferred jets with your favourite seat adjusted to your preferred depth. This ensures optimum massaging effects for all body sizes. The jets are organised in JetPaks, which minimises the amount of piping inside the hot tub and, in turn, makes it less susceptible to errors. This also significantly reduces energy costs while improving performance compared to conventional hot tubs.



VARIED MASSAGE OPTIONS

Up to 18 different JetPaks depending on the model ensure an individual experience. Adapted to your personal wellness needs and preferences.

EASY POSITIONING

The JetPaks can be clicked into the desired position – even when the hot tub is in operation.

INDIVIDUAL SEAT DEPTH

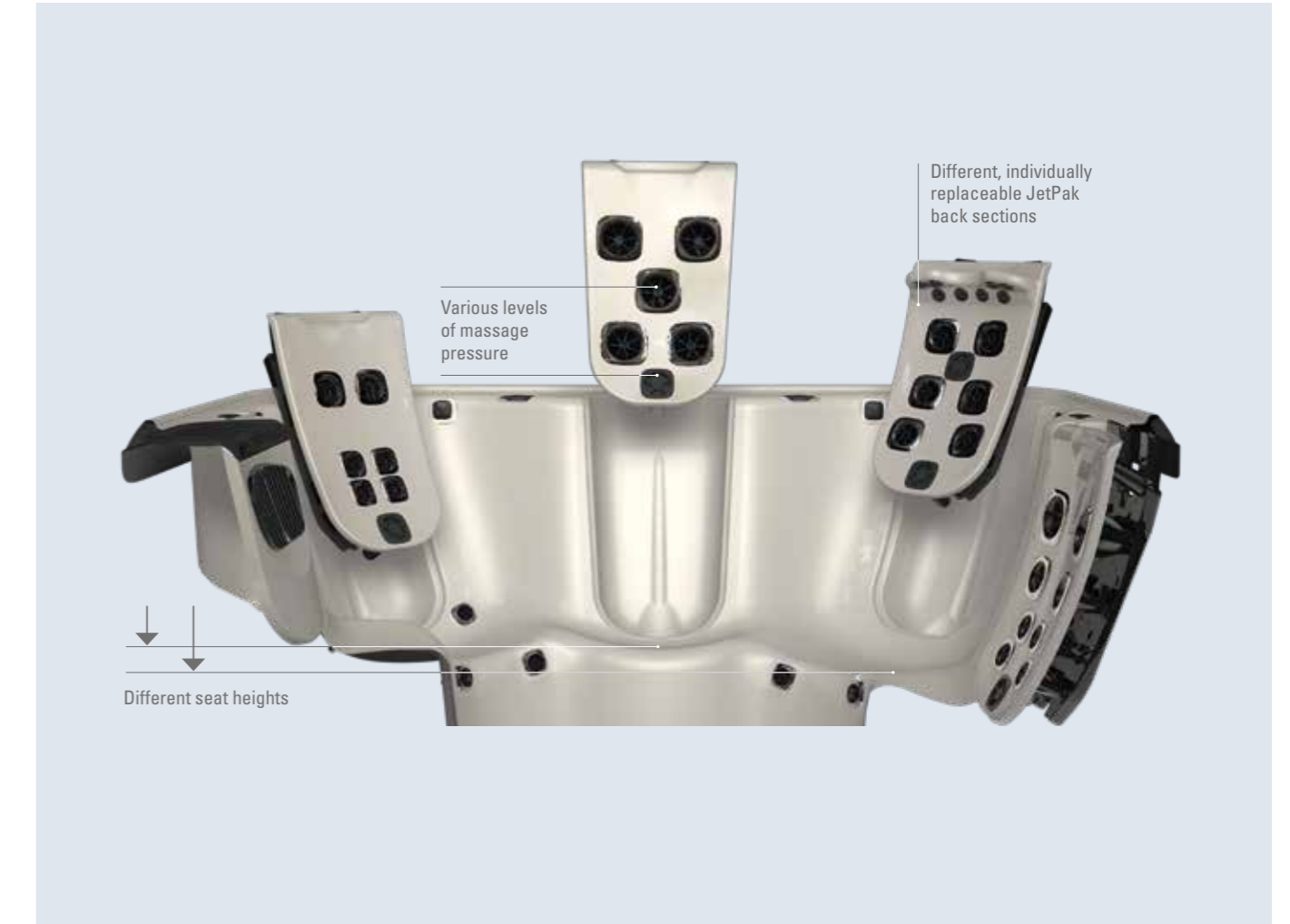
Different seat depths are considered in all series – to adapt the seats to accommodate different body shapes and sizes. Because everyone is different. This ensures your hot tub still offers perfect comfort even if your body shape changes over the years.

Versatile and variable: JetPak technology



Unique!

Change is part of life – and with this in mind, Villeroy & Boch's intelligent hot tubs with the innovative JetPak technology are more versatile than all other conventional hydrotherapy systems. Thanks to this patented technology, you can upgrade your hot tub at any time to include the JetPaks with the latest jet technology.

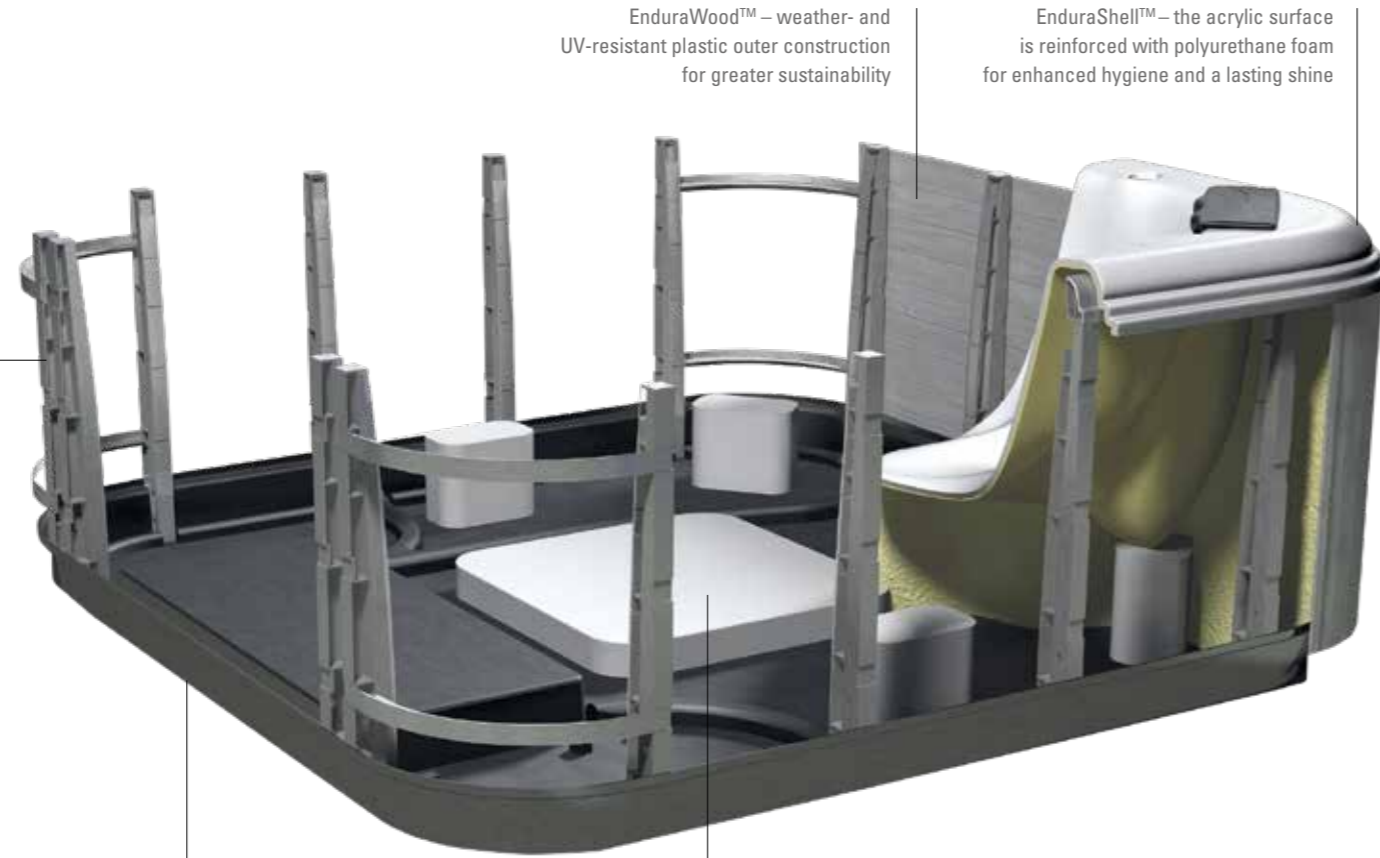


View the easy handling in the demonstration video:



Trust intelligent technology

EnduraBeam™ – the integral frame construction ensures above-average strength and durability



EnduraWood™ – weather- and UV-resistant plastic outer construction for greater sustainability

EnduraShell™ – the acrylic surface is reinforced with polyurethane foam for enhanced hygiene and a lasting shine

EnduraBase™ – the closed ABS floor keeps moisture, pests and small animals out and features integrated electrical wiring

EnduraSupports™ – for increased stability in the footwell and sitting areas

Find out more in the video:



This support structure is maintenance-free!

All Villeroy & Boch hot tubs consist of a durable, robust and fully enclosed support structure: Endura Frame™. This wood-free and metal-free structure is resistant to both weather and rust and keeps pests out. Together with this construction, the robust plastic supports and high-quality UV-resistant panelling ensure above-average strength and a **long service life**.

Efficient and durable: Villeroy & Boch's intelligent technology

Villeroy & Boch's technology replaces the seemingly endless piping in standard hot tubs with new, intelligent connections. Thanks to the patented JetPak technology, these hot tubs have up to 90% less plumbing.

Find out more about our efficient piping system in the video



The advantages:

- Minimising the risk of leaks
- Energy efficiency: most of the plumbing runs through the warm water so very little heat is lost.
- More power thanks to shorter, direct water pipes.
- As there are no diverter valves, there is full power on all seats simultaneously.
- The individual technical units are installed to allow easy access from outside.

This video shows the intelligent hot tub production:

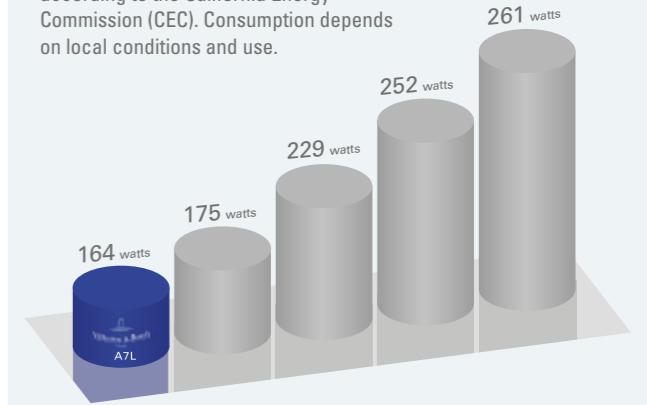


In comparison to our patented JetPak technology, this is the outdated technology on the market:



Save money and the environment:

Comparable high-profile competitors, according to the California Energy Commission (CEC). Consumption depends on local conditions and use.

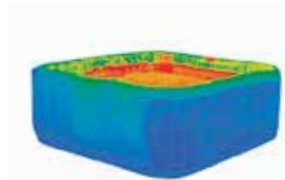


VILLEROY & BOCH HOT TUBS

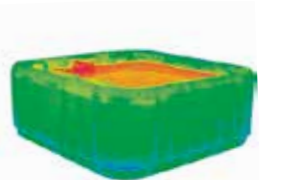
- The best in their class:
- up to 90% less pipework
 - improved thermal insulation
 - energy-saving fittings



Villeroy & Boch hot tubs are probably the most economical in the world. The full-foam insulation ensures that no energy is lost. The innovative JetPak technology uses the heat from the hot tub as up to 90% of the pipes run through the warm pool water so the warmth of the water in the pipes is transferred to the water in the hot tub. Villeroy & Boch hot tubs are even more efficient because, unlike standard hot tubs that use cold external air, they use the warm air from behind the JetPaks and the warm pump area.



Villeroy & Boch hot tub: The water stays warm.



Standard hot tub without full-foam insulation.

RELAXATION FOR QUALITY OF LIFE
 Spending time in a hot tub activates the parasympathetic nervous system to quickly encourage relaxation. It stimulates various physical functions and, after just a short time, the body enters a state of deep relaxation. Relaxing in a hot tub helps to promote the work-life balance.

HEALTH WITH HOT TUBS

Hot water - amazing effects

A hot tub is an ideal way to enjoy the beneficial effects of hot water all year round, summer and winter. Whether alone, with your partner or family and friends - enjoying shared moments together is a very special pleasure. And that's not all, your new oasis of relaxation has even more to offer: it helps to strengthen the heart and circulation, relieve muscles and joints, promote blood flow and activate the body's self-healing powers. It will also help you slip into a deep, restorative sleep at the end of the day.



HOW HYDROTHERAPY WORKS:

- Strengthens the body through massage
- Removes waste products
- Stimulates blood circulation
- Eases tension in joints & muscles
- Alleviates pain in the joints
- Helps to prevent backache



RADIANCE & VITALITY

- Deep relaxation by stimulating physical functions
- Stimulation of the metabolism
- Stronger blood circulation in the skin

GUARANTEED INDIVIDUALITY
 18 different JetPaks allow everyone to choose their own personal massage options. And different seat heights ensure everyone can sit in comfort.



.....
Lutz Hertel
 CHAIRMAN OF THE
 GERMAN WELLNESS ASSOCIATION

“Regular use of a hot tub has been shown to have many benefits for our health. It also has a relaxing effect and promotes restorative sleep.”

.....



JETPAKS AND HEALTH

Do you have back problems or muscular tension and want an individual massage of the affected area? Villeroy & Boch's JetPak technology provides an individual massage for specific areas of the back, alleviating pain effectively. From Sport Flow to Wellness Flow or Relax Flow therapies - simply decide which of the three options best meets your needs. And from experience, we know that a combination of different massage techniques produces the best results. Select your favourites from a variety of possible and retrofittable JetPaks to meet your individual needs. 18 different JetPaks for the Premium Line and Comfort Line cover every option. 6 JetPaks are available for the Design Line. All JetPaks fit every seat. Changing the JetPaks allows for many new seat and massage configurations and greater variety.

▶ Find out more about the individual options of the JetPak therapy system – watch the video here:



**PULSATOR –
A GENTLE, PULSATING MASSAGE**
Six rotating and pulsating jets create a pleasant massage experience, helping you to relax.
Also available for the Design Line.



**DEEP RELIEF –
DEEP PAIN RELIEF**
Powerful, deep massage, providing relief even for deep-seated muscular tension.



**NECKBLASTER –
MAXIMUM RELAXATION**
The deep massage helps to release tension in the neck and shoulders – particularly after spending a long time sitting in the office and at the computer.

SPORT FLOW THERAPY

Depending on the arrangement, combination and intensity of the rotating, pulsating, massaging and kneading jets, the muscles are strengthened or muscular tension is released. This is achieved precisely where it's needed most: at the back of the neck, in the shoulders, the upper or middle back, or in the lumbar region.



**ALLEVIATE –
CAREFULLY ADAPTED THERAPY**
Each of the targeted therapy jets focuses on different massage points and muscle regions in the body.
Also available for the Design Line.



**GYRO'SSAGE –
A GENTLE, SOOTHING FEELING**
Five rotating, single-pulse jets offer a rhythmical, kneading massage for the whole back, so you can float away into a calm, meditative state.



**ACUTHERAPY –
TARGETED RELAXATION**
Jets massage deep tissue in order to release tension, whilst others apply a gentle pressure in order to relax the shoulders and middle back.



TRIO –
A GENTLE, PULSATING MESSAGE
 Six rotating and pulsating jets create a pleasant massage experience, helping you to relax.



OSCILLATOR –
ULTIMATE KNEADING MESSAGE
 Like your own personal massage therapist, this uniform kneading massage kneads all the important areas of your back.
Also available for the Design Line.



FIBRO THERAPY –
REDUCES PAIN AND PROMOTES HEALTH
 A unique kneading principle eases the lower back whilst, at the same time, a deep, continuous massage at thoracic vertebrae level creates a relaxing effect.



NECK MASSEUSE –
TARGETED THERAPY FOR THE NECK
 The numerous neck and shoulder jets create a powerful massage. They penetrate deep into the tissue in order to alleviate tension and release new energy – particularly after spending a long time working in the office or at the computer.



RAINSHOWER –
THE TINGLE FACTOR
 A beneficial and gentle massage, which is particularly popular with women, reduces mental stress and is also good for your skin. No other hot tub can offer you anything comparable as these shower jets are only available in Villeroy & Boch JetPaks.
Also available for the Design Line.



LUMBAR –
TARGETED THERAPY FOR THE LOWER BACK
 Special pressure points in the lower back are given a deep hydromassage. This part of the back is used when lifting objects, when running and walking. Also ideal after longer car journeys.

WELLNESS FLOW THERAPY

Ranging from a light and gentle massage to a powerful and deep-working kneading action, Wellness Flow Therapy relaxes both body and spirit. The stresses and strains of the day evaporate leaving you feeling relaxed and calm. Optimising the position of the neck jets is only a small change to the JetPaks but it has a big effect. Thanks to the exact arrangement of the JetPaks above the shoulders for this kind of massage, they have a healing effect.



VERSA –
CAREFULLY ADAPTED THERAPY
 Six targeted therapy jets are arranged to address different massage points and muscle regions in the body.



WELLNESS –
HEALTH AND WELLNESS GO HAND IN HAND
 This combination of different types of jet is extremely popular in order to create an ideal massage experience for everyone wanting to boost their general well-being.
Also available for the Design Line.



CASCADIA –
WATERFALL WITH A MASSAGE EFFECT
 Designed as a gentle four-point massage, this combination of jets targets your neck with a soothing jet of water.



RELIEVER –
MAXIMUM RELAXATION
 The deep massage for the lower back – combined with a gentle kneading of the shoulder area – relaxes both body and spirit.



SPINAL'SSAGE –
SIMPLY RELAXED
 The two rotating and pulsating jets relax primarily the middle back – a simple yet highly effective massage.



SPINAL HEALTH –
POWERFUL THERAPY FOR THE BACK MUSCLES
 Both relaxing and invigorating at the same time, the massage of the muscles along the spine offers deep relaxation.
Also available for the Design Line.

RELAX FLOW THERAPY

Enjoy the moment, experience the comforting warmth of your hot tub, the gentle tingling of an invigorating massage – with Relax Flow Therapy, mental stress simply washes away. Innovative JetPak technology paves the way for further comfort: The two-stage pumps can be switched from a power massage to a gentle relaxing massage at the push of a button. Further fine adjustments can be made on every JetPak.

DESIGN LINE

— Perfect design —



JUST SILENCE

STATE-OF-THE-ART TECHNOLOGIES

Touch screen operation, integrated LED light strips and high-quality materials



reddot award 2016
winner



In its reduction to the essentials, Just Silence pays homage to contemporary architecture and is the ideal complement to modern home interiors. Thanks to its reduced form and straight lines, it becomes a design highlight on any terrace. State-of-the-art technologies, such as touch screen operation, integrated LED light strips and high-quality materials, are all part of the overall effect. The innovative, flexible seat and lounge concept offers up to five different reclining positions and an unprecedented level of comfort in this size category.



More design –
more fun in the hot tub.



JET DESIGN
in brushed
stainless steel

JETPAKS
in 6 different JetPak
versions, individual
design options

FUNCTIONAL DESIGN
Integrated in the overall look:
Design neck cushions

LED LIGHT STRIPS
create atmospheric
highlights

SIMPLE OPERATION
using an illuminated
touch screen panel

ATMOSPHERIC
The integrated illuminated
Design waterfall





JUST SILENCE COMPACT
High-tech and design for small spaces with the Compact version



Equipped with three seats, the Compact version offers the same comfort functions as the Just Silence model. The patented JetPak technology boasts replaceable back sections with individual massage functions for a personalised relaxation experience. Despite the purist pared-down design, this model also comes with a high level of innovation, technical perfection and functional comfort.

JetPak selection for the DESIGN LINE



Oscillator



Pulsator



Alleviate



Spinal Health



RainShower



Wellness

Just Silence



5-person hot tub to share the bathing experience with family and friends.

Dimensions: 224 x 213 x 86 cm
Number of recliners/seats: 5
JetPaks: 3
JetPak starter set: Alleviate, Oscillator, RainShower
Design neck cushions: 6
Weight with cover (dry/max. filled to line): 279 kg/1767 kg
Capacity (to line)/max.: 1488 l/2013 l
Pump capacity: 1 pump, 2.5 HP + additional filter pump

Just Silence Compact



3-person hot tub to share the leisure experience with family and friends.

Dimensions: 208 x 169 x 78 cm
Number of recliners/seats: 3
JetPaks: 3
JetPak starter set: Pulsator, Wellness, Spinal Health
Design neck cushions: 4
Weight with cover (dry/max. filled to line): 206 kg/1456 kg
Capacity (to line)/max.: 947 l/1299 l
Pump capacity: 1 pump, 2.5 HP + additional filter pump

Unique seat and lounge concept



MORE OPTIONS
The straight lines create more space and, consequently, a variety of different sitting and reclining combinations with comfortable legroom. The Just Silence hot tub can accommodate up to 5 people and the Just Silence Compact is suitable for up to 3 people.

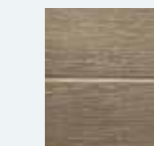
Available colour combinations:

Inner shell

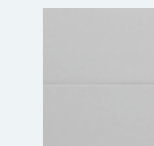


Snow

Outer panelling

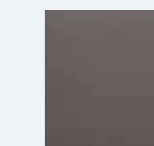


Timber



Light Grey

Cover



Ash Grey



PREMIUM LINE

— Luxury complete with all the fittings —

PREMIUM LINE



VARIED SIZES
Models for 8 people
through to hot tubs
for 3 users

Unique hot tub experiences



Video of luxury design hot tubs



Exterior lighting as standard

Individual colour scheme, a wide range of models and optimum ergonomics: The Premium Line can be customised to your preferences and needs. A premium hot tub also comes with premium features. From the jet design in high-quality stainless steel with multiple options for the feet, legs and hips. To the illuminated waterfall and atmospheric interior and exterior lighting. Not forgetting additional comfort features such as premium neck cushions and the touch screen control panel.



Premium neck cushions

Cascadia waterfall

Jets in brushed stainless steel

User-friendly touch panel operation

Wide choice of colours for inner shells and outer panelling

A9L



8-person hot tub to share the bathing experience with friends and the whole family.

Dimensions: 239 x 279 x 97 cm

Number of recliners/seats: 1/7 seats

JetPaks: 7

JetPak starter set:

Pulsator, DeepRelief, Neck Masseur, Versa, Trio, Lumbar, RainShower

Premium neck cushions: 7

Weight with cover
(dry/max. filled to line): 413 kg/3147 kg

Capacity (to line)/max.: 2161 l/2816 l

Pump capacity: 3 pumps, 2 HP

A8



8-person hot tub to share the leisure experience with family and friends.

Dimensions: 239 x 239 x 97 cm

Number of recliners/seats: 0/8 seats

JetPaks: 6

JetPak starter set:

Gyro'ssage, DeepRelief, Neck Masseur, Cascadia, Spinal'ssage, RainShower

Premium neck cushions: 6

Weight with cover
(dry/max. filled to line): 344 kg/2388 kg

Capacity (to line)/max.: 2049 l/2563 l

Pump capacity: 2 pumps, 2 HP

A8L



6-person hot tub to share the leisure experience with family and friends.

Dimensions: 239 x 239 x 97 cm

Number of recliners/seats: 1/5 seats

JetPaks: 6

JetPak starter set:

Gyro'ssage, Oscillator, Neck Masseur, Cascadia, Spinal Health, RainShower

Premium neck cushions: 6

Weight with cover
(dry/max. filled to line): 353 kg/2388 kg

Capacity (to line)/max.: 2044 l/2503 l

Pump capacity: 2 pumps, 2 HP

A8D



5-person hot tub with two very comfortable and differently-shaped recliners with a maximum range of equipment.

Dimensions: 239 x 239 x 97 cm

Number of recliners/seats: 2/3 seats

JetPaks: 5

JetPak starter set:

Gyro'ssage, Oscillator, Neck Masseur, Cascadia, RainShower

Premium neck cushions: 5

Weight with cover
(dry/max. filled to line): 346 kg/2284 kg

Capacity (to line)/max.: 1938 l/2450 l

Pump capacity: 2 pumps, 2 HP

A7



6-person hot tub with four particularly comfortable corner seats for optimum communication.

Dimensions: 224 x 224 x 91 cm

Number of recliners/seats: 0/6 seats

JetPaks: 5

JetPak starter set:

DeepRelief, Gyro'ssage, Neck Masseur, Spinal Health, RainShower

Premium neck cushions: 5

Weight with cover
(dry/max. filled to line): 300 kg/1943 kg

Capacity (to line)/max.: 1643 l/2111 l

Pump capacity: 2 pumps, 2 HP

A7L



6-person hot tub with diverse massage options and special leg and hip jets.

Dimensions: 224 x 224 x 91 cm

Number of recliners/seats: 1/5 seats

JetPaks: 5

JetPak starter set:

Alleviate, Gyro'ssage, Neck Masseur, Lumbar, RainShower

Premium neck cushions: 5

Weight with cover
(dry/max. filled to line): 308 kg/1974 kg

Capacity (to line)/max.: 1666 l/2067 l

Pump capacity: 2 pumps, 2 HP

A6L



5-person hot tub. Thanks to the reduced external dimensions, ideal for terraces and balconies. The spacious interior is particularly suitable for a family with two children.

Dimensions: 203 x 224 x 86 cm

Number of recliners/seats: 1/4 seats

Premium neck cushions: 4

JetPaks: 4, JetPak starter set:

DeepRelief, Neck Masseur, Fibro Therapy, RainShower

Weight with cover
(dry/max. filled to line): 261 kg/1585 kg

Capacity (to line)/max.: 1324 l/1804 l

Pump capacity: 1 pump, 2.5 HP

A5L



3-person hot tub. Thanks to its compact dimensions, it fits through most doors and is thus particularly suitable for indoor installation. Perfect for couples – also with one child.

Dimensions: 173 x 213 x 79 cm

Number of recliners/seats: 1/2 seats

Premium neck cushions: 3

JetPaks: 3

JetPak starter set:

Pulsator, Alleviate, RainShower

Weight with cover
(dry/max. filled to line): 206 kg/1126 kg

Capacity (to line)/max.: 920 l/1250 l

Pump capacity: 1 pump, 2.5 HP

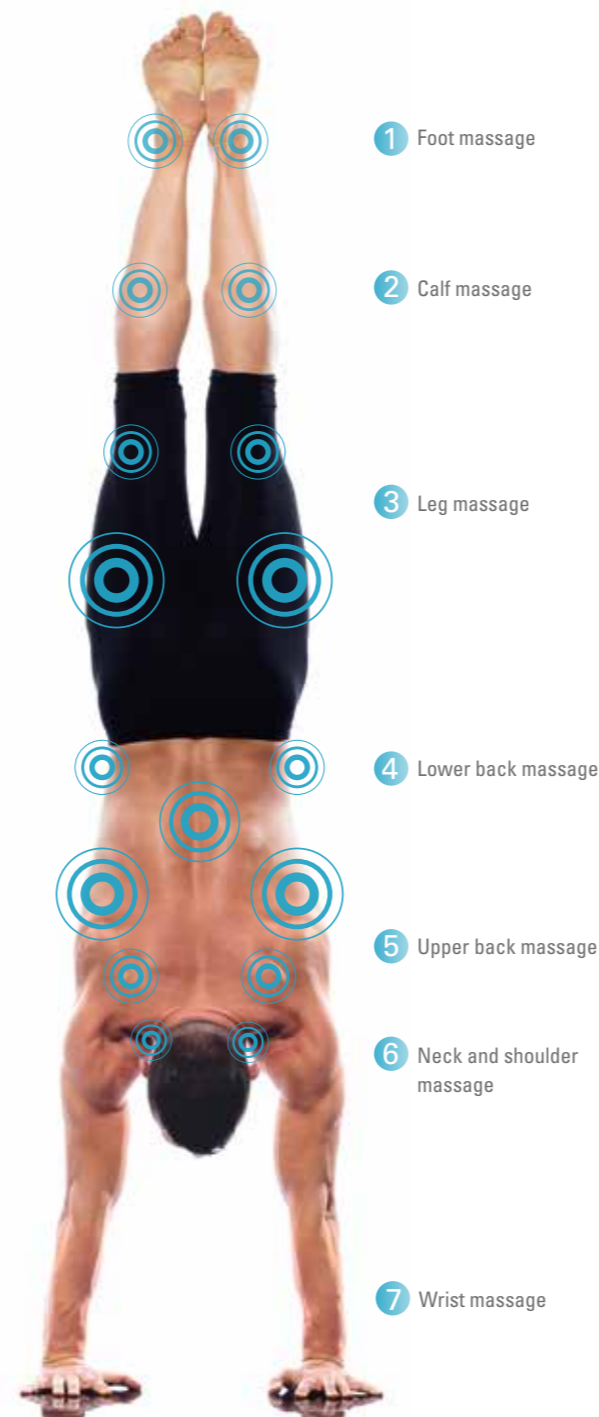


*After exercise:
The Fitness Edition
combines sports and
hydrotherapy*

More information about the Fitness Edition:



From long experience, we know: stronger massages are important for sports enthusiasts. They help to strengthen muscle groups that come under particular stress and gently regenerate affected areas. Every single one of the four Fitness Edition models is therefore fitted with a specific selection of JetPaks. They combine massage and wellness functions that are best suited to regenerating the body. Additional pump capacity allows maximum power at each seat. Different seat heights allow the jets to reach the stimulation zones of users regardless of their height. And it is precisely this high level of individuality and flexibility that sports enthusiasts appreciate. In terms of comfort, the Fitness Edition and Premium Line are very similar, although the JetPaks in the Premium Line are less intense and have a more balanced massage profile.



A9L Fitness



The 8-person hot tub provides maximum massage and wellness comfort as well as plenty of space and variety. Perfect for get-togethers with other sports enthusiasts to speed up recovery or simply to enjoy a relaxing wellness experience with friends and family.

Dimensions: 239 x 279 x 97 cm
Number of recliners/seats: 1/7 seats
JetPaks: 7
JetPak starter set: Pulsator, DeepRelief, Neck Masseuse, Versa, RainShower, Lumbar, Trio
Premium neck cushions: 7
Weight with cover (dry/max. filled to line): 413 kg/3147 kg
Capacity (to line)/max.: 2161 l/2816 l
Pump capacity: 3 pumps, 2 HP

A8D Fitness



This hot tub comes with 5 JetPaks. Two spacious recliners provide maximum comfort. The user-friendly seating offers more than enough legroom.

Dimensions: 239 x 239 x 97 cm
Number of recliners/seats: 2/3 seats
JetPaks: 5
JetPak starter set: Pulsator, Cascadia, NeckBlaster, DeepRelief, Trio
Premium neck cushions: 5
Weight with cover (dry/max. filled to line): 346 kg/2284 kg
Capacity (to line)/max.: 1938 l/2450 l
Pump capacity: 2 pumps, 2.5 HP

A7L Fitness



This 6-person hot tub provides five different massage options, ranging from gentle to deep and powerful. Leaving one spot that can be used as a relaxation lounger after a training session.

Dimensions: 224 x 224 x 91 cm
Number of recliners/seats: 1/5 seats
JetPaks: 5
JetPak starter set: DeepRelief, NeckBlaster, Versa Trio, Pulsator
Premium neck cushions: 5
Weight with cover (dry/max. filled to line): 308 kg/1974 kg
Capacity (to line)/max.: 1666 l/2067 l
Pump capacity: 2 pumps, 2.5 HP

A6L Fitness



This 5-person hot tub is a good choice for your patio or balcony where space is limited thanks to its concentrated size. The interior still provides plenty of legroom. Four different seat depths allow everyone to choose a customised sports massage.

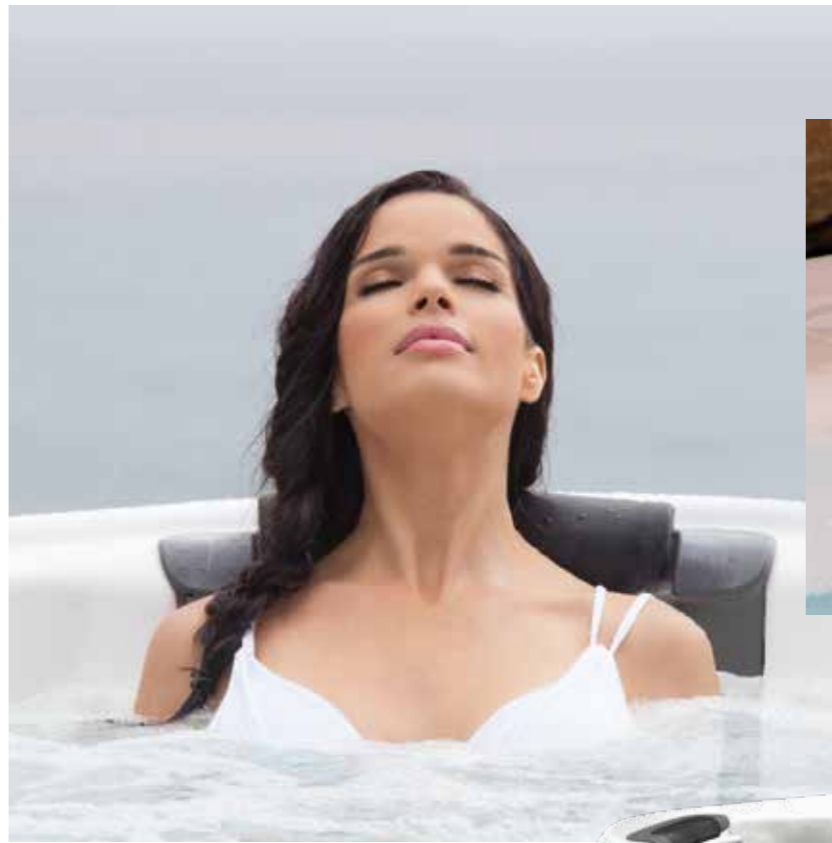
Dimensions: 203 x 224 x 86 cm
Number of recliners/seats: 1/4 seats
JetPaks: 4,
JetPak starter set: NeckBlaster, Pulsator, DeepRelief, Trio
Premium neck cushions: 4
Weight with cover (dry/max. filled to line): 288 kg/1612 kg
Capacity (to line)/max.: 1324 l/1804 l
Pump capacity: 2 pumps, 2 HP



COMFORT LINE

— Designed for comfort —

COMFORT LINE



LUXURIOUS
Comfort water
feature

AS STANDARD
JetPak technology
with Grey-Jets

CONTROL PANEL
With Comfort Control

COMFORTABLE
Comfort neck
cushions

Wide choice of colours
for inner shells and outer
panelling

Each of the Comfort Line models features the modern JetPak technology and sets the same high standards as our premium hot tubs. They combine all the features you need for optimum comfort, as well as high quality for exceptional durability and good value for money.

R8L



6-person hot tub with a large number of individual massage possibilities.

Dimensions: 239 x 239 x 97 cm
Number of recliners/seats: 1/5 seats
JetPaks: 4
JetPak starter set:
DeepRelief, Wellness, Neck Masseur, Rain Shower
Comfort neck cushions: 4
Weight with cover (dry/max. filled to line): 353 kg/2690 kg
Capacity (to line)/max.: 1984 l/2408 l
Pump capacity: 2 pumps, 2 HP

R7



6-person hot tub with four particularly comfortable corner seats.

Dimensions: 224 x 224 x 91 cm
Number of recliners/seats: 0/6 seats
JetPaks: 4
JetPak starter set:
Oscillator, Neck Masseur, Lumbar, RainShower
Comfort neck cushions: 4
Weight with cover (dry/max. filled to line): 300 kg/1935 kg
Capacity (to line)/max.: 1635 l/2051 l
Pump capacity: 2 pumps, 2 HP

R7L



6-person hot tub with a variety of seating options.

Dimensions: 224 x 224 x 91 cm
Number of recliners/seats: 1/5 seats
JetPaks: 4
JetPak starter set:
Alleviate, Reliever, Neck Masseur, RainShower
Comfort neck cushions: 4
Weight with cover (dry/max. filled to line): 308 kg/1921 kg
Capacity (to line)/max.: 1613 l/2029 l
Pump capacity: 2 pumps, 2 HP

R6L



5-person hot tub. Its compact dimensions make it ideal for patios and balconies and a perfect choice for young families.

Dimensions: 203 x 224 x 86 cm
Number of recliners/seats: 1/4 seats
JetPaks: 3
JetPak starter set:
Alleviate, Oscillator/Neck Masseur, RainShower
Comfort neck cushions: 3
Weight with cover (dry/max. filled to line): 261 kg/1556 kg
Capacity (to line)/max.: 1295 l/1766 l
Pump capacity: 1 pump, 2.5 HP

R5L



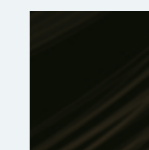
3-person hot tub. Thanks to its compact dimensions, it fits through most doors and is thus particularly suitable for indoor installation. Perfect for couples - also with one child.

Dimensions: 173 x 213 x 79 cm
Number of recliners/seats: 1/2 seats
JetPaks: 2
JetPak starter set:
Reliever, RainShower
Comfort neck cushions: 2
Weight with cover (dry/max. filled to line): 206 kg/1096 kg
Capacity (to line)/max.: 890 l/1212 l
Pump capacity: 1 pump, 2.5 HP

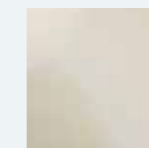
Your choice of colours for the Premium Line & Comfort Line

Inner shells¹⁾Cloud²⁾

Granite



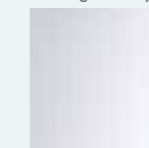
Midnight Canyon



Pearl



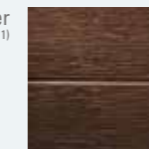
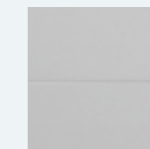
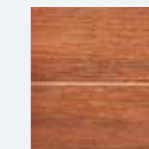
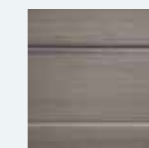
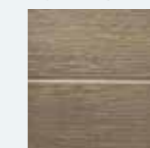
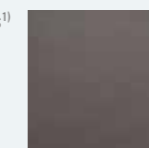
Platinum



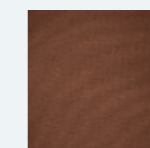
Snow



Titanium

Outer panelling¹⁾Chestnut²⁾Light Grey²⁾³⁾Orchard³⁾Stone Grey²⁾Timber³⁾Covers¹⁾

Ash Grey



Chocolate

- 1) All colour combinations possible at no additional charge
- 2) Colour combinations not available for A9L
- 3) Colour combinations not available for Comfort Line

If you would like a different colour combination or different colours of JetPaks for your Premium or Comfort Line hot tub, we'll be happy to customise a hot tub for you – at no additional charge.

Standard colour combinations:

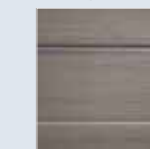
Comfort Line

Inner shell:



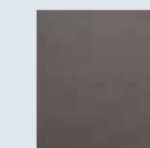
Snow

Outer panelling:



Stone Grey

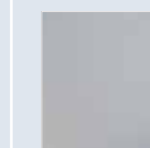
Cover:



Ash Grey

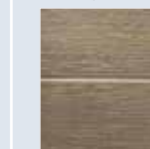
Premium Line Variant 1:

Inner shell:



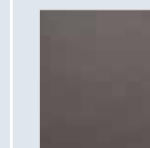
Titanium

Outer panelling:



Timber

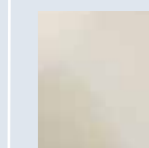
Cover:



Ash Grey

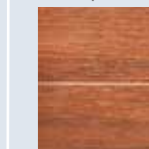
Premium Line Variant 2:

Inner shell:



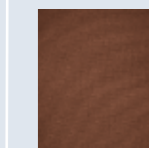
Pearl

Outer panelling:



Orchard

Cover:



Chocolate

Perfect
for combining

X-SERIES

— Top-class product at an entry-level price —



ATMOSPHERIC
Integrated illuminated waterfall

WIDE SELECTION
Wide choice of stainless steel jets with different arrangements and functions

With its X-Series models, Villeroy & Boch also offers ideal entry-level options for outdoor hot tubs. While they do not come with the JetPak technology: you have the reassurance of our high quality standards for workmanship, energy efficiency and performance.

In comparison with outdated competing solutions, we are a step ahead: with new technologies that work far more reliably and with greater energy efficiency than conventional systems. From our intelligent neat piping systems that minimise the risk of leaks to our maintenance-free, completely enclosed Endura Frame™ support construction.

Our entry-level models also offer standards and extras that are usually only available with top-of-the-line products. Starting with various models featuring a wide choice of stainless steel jets with different arrangements and functions, through to attractive features such as an illuminated waterfall and comfortable headrests.



Choice of two high-quality outer panelling options

X8



8-person hot tub with a large number of individual massage possibilities.

Dimensions: 239 x 239 x 97 cm
Number of seats: 8
X-Series neck cushion: 4
Weight with cover (dry/max. filled to line): 344 kg/2184 kg
Capacity (to line)/max.: 1840 l/2314 l
Pump capacity: 2 pumps, 2 HP

X7L



6-person hot tub with recliner and two comfortable corner seats.

Dimensions: 224 x 224 x 91 cm
Number of seats: 6
X-Series neck cushion: 4
Weight with cover (dry/max. filled to line): 308 kg/1781 kg
Capacity (to line)/max.: 1473 l/1926 l
Pump capacity: 2 pumps, 2 HP

X6L



5-person hot tub with recliner and a variety of seating options.

Dimensions: 203 x 224 x 86 cm
Number of recliners/seats: 1/4 seats
X-Series neck cushion: 4
Weight with cover (dry/max. filled to line): 260 kg/1449 kg
Capacity (to line)/max.: 1189 l/1684 l
Pump capacity: 1 pump, 2.5 HP

X5L



3-person hot tub. With its reduced dimensions, it is ideal for terraces and balconies and also suitable for young families.

Dimensions: 173 x 213 x 79 cm
Number of recliners/seats: 1/2 seats
X-Series neck cushion: 3
Weight with cover (dry/max. filled to line): 206 kg/1096 kg
Capacity (to line)/max.: 890 l/1212 l
Pump capacity: 1 pump, 2.5 HP

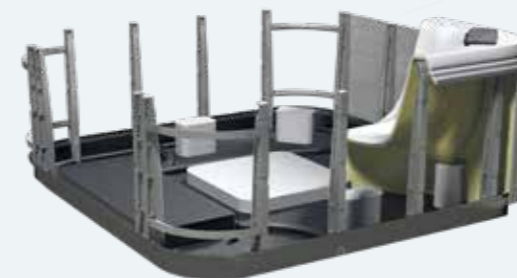
X6R



5-person hot tub. Large round shape allows ideal communication.

Dimensions: 201 x 91 cm
Number of seats: 5
Weight with cover (dry/max. filled to line): 228 kg/1330 kg
Capacity (to line)/max.: 1102 l/1300 l
Pump capacity: 1 pump, 2.5 HP

Uncompromising quality for a long service life:



Extremely stable and durable: the ABS plastic Endura Frame™ support construction.

Conventional product



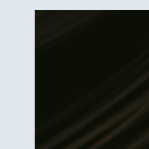
Villeroy & Boch technology: A clear design replaces outdated solution with endless pipes. Shorter pipes = more power!

Your choice of colours:

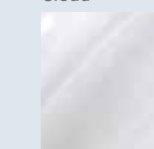
Inner shells¹⁾



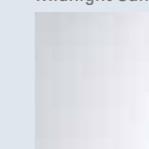
Cloud



Midnight Canyon

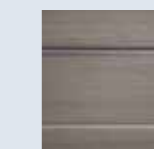


Platinum

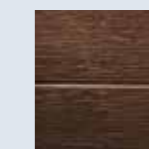


Snow

Outer panelling¹⁾

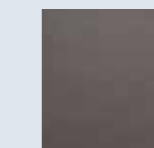


Stone Grey

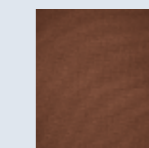


Chestnut

Covers¹⁾



Ash Grey

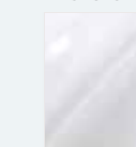


Chocolate

¹⁾ All colour combinations possible

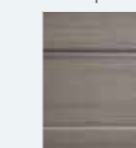
Standard combination, available for immediate delivery:

Inner shell:



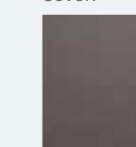
Platinum

Outer panelling:



Stone Grey

Cover:



Ash Grey

Perfect for combining

Fittings in the series | Comparison of all models

● standard
○ optional

Line: Model:	Design Line		Premium Line							Premium Line <i>Fitness Edition</i>				Comfort Line					X-Series					
	Just Silence	Just Silence <i>Compact</i>	A9L	A8	A8L	A8D	A7	A7L	A6L	A5L	A9L <i>Fitness</i>	A8D <i>Fitness</i>	A7L <i>Fitness</i>	A6L <i>Fitness</i>	R8L	R7	R7L	R6L	R5L	X8	X7L	X6L	X5L	X6R
Max. number of people	5	3	8	8	6	5	6	6	5	3	8	5	6	5	6	6	6	5	3	8	6	5	3	5
Seats	5	3	7	8	5	3	6	5	4	2	7	3	5	4	5	6	5	4	2	8	6	5	3	5
Lounger seats	5	3	1	0	1	2	0	1	1	1	1	2	1	1	0	1	1	1	1	0	0	1	1	0
JetPak II™ technology/JetPaks	3	3	7	6	6	5	5	5	4	3	7	5	5	4	4	4	3	2	2	—	—	—	—	—
Arm, hip, leg jets	depending on model	depending on model	depending on model	depending on model	depending on model	depending on model	depending on model	depending on model	depending on model	depending on model	depending on model	depending on model	depending on model	depending on model	depending on model	depending on model	depending on model	depending on model	depending on model	depending on model	depending on model	depending on model	depending on model	depending on model
Jet design	brushed stainless steel	brushed stainless steel	brushed stainless steel	brushed stainless steel	brushed stainless steel	brushed stainless steel	brushed stainless steel	brushed stainless steel	brushed stainless steel	brushed stainless steel	brushed stainless steel	brushed stainless steel	brushed stainless steel	brushed stainless steel	brushed stainless steel	brushed stainless steel	brushed stainless steel	brushed stainless steel	brushed stainless steel	brushed stainless steel	brushed stainless steel	brushed stainless steel	brushed stainless steel	brushed stainless steel
Waterfall	Waterfall design	Waterfall design	Cascadia waterfall	Cascadia waterfall	Cascadia waterfall	Cascadia waterfall	Cascadia waterfall	Cascadia waterfall	Cascadia waterfall	Cascadia waterfall	Cascadia waterfall	Cascadia waterfall	Cascadia waterfall	Cascadia waterfall	Cascadia waterfall	Cascadia waterfall	Cascadia waterfall	Cascadia waterfall	Cascadia waterfall	X-Waterfall	X-Waterfall	X-Waterfall	X-Waterfall	X-Waterfall
Neck cushion	Pillow design	Pillow design	Premium Fit Pillow	Premium Fit Pillow	Premium Fit Pillow	Premium Fit Pillow	Premium Fit Pillow	Premium Fit Pillow	Premium Fit Pillow	Premium Fit Pillow	Premium Fit Pillow	Premium Fit Pillow	Premium Fit Pillow	Premium Fit Pillow	Premium Fit Pillow	Premium Fit Pillow	Premium Fit Pillow	Premium Fit Pillow	Premium Fit Pillow	X Pillow	X Pillow	X Pillow	X Pillow	X Pillow
Endura Frame™ construction	●	●	●	●	●	●	●	●	●	●	●	●	●	●	●	●	●	●	●	●	●	●	●	●
Energy-saving Full-foam insulation	●	●	●	●	●	●	●	●	●	●	●	●	●	●	●	●	●	●	●	●	●	●	●	●
Electrics 230 V or 400V	●	●	●	●	●	●	●	●	●	●	●	●	●	●	●	●	●	●	●	●	●	●	●	●
Illuminated additional control panel	—	—	●	●	●	●	●	●	●	●	●	●	●	●	●	●	●	●	●	—	—	—	—	—
Central LED lighting	with JP™ logo	with JP™ logo	with JP™ logo	with JP™ logo	with JP™ logo	with JP™ logo	with JP™ logo	with JP™ logo	with JP™ logo	with JP™ logo	with JP™ logo	with JP™ logo	with JP™ logo	with JP™ logo	with JP™ logo	with JP™ logo	with JP™ logo	with JP™ logo	with JP™ logo	standard	standard	standard	standard	standard
Illuminated foot area	●	●	●	●	●	●	●	●	●	●	●	●	●	●	●	●	●	●	●	—	—	—	—	—
Illuminated filter area	●	●	●	●	●	●	●	●	●	●	●	●	●	●	●	●	●	●	●	—	—	—	—	—
Illuminated cup holder	—	—	●	●	●	●	●	●	●	●	●	●	●	●	●	●	●	●	●	—	—	—	—	—
Exterior lighting	●	●	●	●	●	●	●	●	●	●	●	●	●	●	●	●	●	●	●	—	—	—	—	—
Illuminated external logo	●	●	●	●	●	●	●	●	●	●	●	●	●	●	●	●	●	●	●	—	—	—	—	—
Stereo system, depending on model	○	○	○	○	○	○	○	○	○	○	○	○	○	○	○	○	○	○	○	○	○	○	○	○
WiFi module for smartphones	○	○	○	○	○	○	○	○	○	○	○	○	○	○	○	○	○	○	○	○	○	○	○	○
3 kW heating	●	●	●	●	●	●	●	●	●	●	●	●	●	●	●	●	●	●	●	●	●	●	●	●
Two-stage pump	●	●	●	●	●	●	●	●	●	●	●	●	●	●	●	●	●	●	●	●	●	●	●	●
2.0/2.5 HP pump, depending on model	●	●	●	●	●	●	●	●	●	●	●	●	●	●	●	●	●	●	●	●	●	●	●	●
Ozonator	●	●	●	●	●	●	●	●	●	●	●	●	●	●	●	●	●	●	●	●	●	●	●	●
2 efficient filters	●	●	●	●	●	●	●	●	●	●	●	●	●	●	●	●	●	●	●	●	●	●	●	●
Automated filter cycles	●	●	●	●	●	●	●	●	●	●	●	●	●	●	●	●	●	●	●	●	●	●	●	●
Stable insulating cover	●	●	●	●	●	●	●	●	●	●	●	●	●	●	●	●	●	●	●	●	●	●	●	●
CE mark/TÜV approval	●	●	●	●	●	●	●	●	●	●	●	●	●	●	●	●	●	●	●	●	●	●	●	●

* Second pump just one-stage

Practical accessories

Ideal additions

As a general rule, Villeroy & Boch outdoor hot tubs are delivered with all the selected extra features as a complete package. To put the finishing touches to it all, you might want to add – matching your taste and preferences – a few supplementary components. You could get steps to make it easier to get into your spa or place a bench, a towel holder and decorative planters nearby. You could also give your hot tub a roof. Practical accessories are available for each model: from stereo sound systems with WiFi connection to additional pumps and the EOS water maintenance system to reduce the use of chemicals.

MATCHING COVERS
To keep heat in and dirt out.



HYDRO COVERLIFTER
Comfortable protection



EASY COVERLIFTER
Easily cover & uncover your hot tub



EASY ACCESS AND EXIT
Hot tub steps

AVAILABLE UPGRADES
Additional options for all series:



HiFi audio systems with concealed speakers and subwoofer for amazing sound quality



EOS water-cleaning system



Additional pumps for the deepest possible effect



Service and sales advice



What do I have to consider with an outdoor hot tub?

If you want to treat yourself and your family to the luxury of having your own outdoor hot tub, it is a good idea to check out the details of its construction to ensure you can enjoy your very own hot tub for many years to come. A Villeroy & Boch hot tub is a safe choice. Even its support construction is weatherproof and maintenance-free. The completely enclosed construction has no wood or metal parts which means nothing can rot or rust. Villeroy & Boch hot tubs are also among the most efficient in their class. The full-foam insulation ensures that no energy is lost. The JetPak technology allows further energy savings by using the air behind the JetPaks as well as the heat from the tub. Another efficiency bonus: you can pre-set both the temperature and the filter cycle.



Where can I place my outdoor hot tub?

Designed to be free-standing, Villeroy & Boch's weatherproof and UV-resistant hot tubs can be installed outside in a range of places. It's important to have a suitable power connection nearby or to let a professional electrician do the wiring up to your very own favourite spot. If you would rather have your hot tub closer to the house and want to enjoy a good view while soaking in your tub, then the patio is the perfect spot for your very own feel-good hot tub. Or how about placing your hot tub outside in the garden, for a romantic effect, in nature surrounded by plants? If you also fit it with effective roofing such as a pavilion, then your hairstyle and towels will be protected from rain while you enjoy your soak. It also creates an overall inviting look. Good to know: the tub is filled using a hose and is just as easy to empty again. Simply place the hose in the nearest accessible drain.



What kind of foundation does an outdoor hot tub need?

No matter where you want to place your hot tub outside, you will always need a level foundation for the entire construction. If the whirlpool is to go in the garden, then you may have to prepare the ground to make it level. If you choose your patio as the perfect spot for your hot tub, then you will need to be aware that even small tubs can be really heavy when they are completely full of water. It is always a good idea to consult a specialist who can reliably advise you as to whether the structural requirements are met.

To ensure the smooth delivery of your hot tub, make sure there are no potential obstacles in the way. Occasionally a crane is required to place the hot tub in its final position. To help you prepare for delivery, please note the precise dimensions of your hot tub. Additionally: the A5L and R5L models are our most compact hot tubs and can also be delivered to smaller spaces.

Check out our references: Browse our customers' design ideas here.



How noisy is an outdoor hot tub?

When buying an outdoor hot tub, one of the first questions that comes up concerns noise, especially in regard to the neighbouring properties. The circulation pumps, heating and filter system in all Villeroy & Boch hot tubs are very quiet thanks to innovative technologies. The filter cycle can also be set individually to make sure this does not take place at night or during quiet times. Also: the subtle bubbling, accompanied by harmonious sounds from the integrated stereo system, has a calming effect and will be barely audible to your neighbours.



Pay attention to energy efficiency when heating and filtering your hot tub!

To allow you to heat your hot tub as easily and efficiently as possible, five different heating programmes are pre-installed. Choose the most appropriate programme depending on how often and intensively you use your hot tub. For example, you can specify that you only want to use your hot tub at weekends or in the evening. You can also specify certain times when you won't be using your hot tub. Customised settings in the programmes allow you to heat your outdoor hot tub to the optimum temperature at the right time. This means that your hot tub is heated only when it is used and energy is conserved as far as possible outside these times. Intelligent sensors and software give you complete control over all heating periods. The aim is always to ensure maximum energy efficiency and sparing use of heat. Control of water quality is just as energy efficient as the heating. Water filtering is integrated in each of the five heating programmes. This means: whenever you use your hot tub, the water in the tub is filtered automatically and disinfected with ozone. If you use your hot tub more frequently, you can also choose to completely filter the water several times a day. Overall, Villeroy & Boch hot tubs are



An investment in an outdoor hot tub needs careful consideration to ensure you are still happy and satisfied with your purchase in years to come. Choosing the durable quality and high energy-efficiency of a Villeroy & Boch hot tub is always a good long-term decision.



probably the most economical and energy-efficient choice currently available for the home – thanks to their pioneering technology.

Where can I find additional professional help?

If you can't find the answer to your question, then please use the contact form to send your query directly to Villeroy & Boch or a local dealer:

Contact Villeroy & Boch directly using the contact form:



<https://villeroyboch.com/outdoor-whirlpools-kontakt>

Find professional dealers near you with the dealer finder:



<https://villeroyboch.com/outdoor-whirlpools-haendlersuche>

Care information and cleaning tips



Follow our practical care and maintenance tips to ensure you're ready for a relaxed and enjoyable hot tub experience.

How to clean your hot tub correctly

Clean the **cover** of the tub regularly, using a damp cloth to prevent any dirt from adhering. Treat the cover with a care product once or twice a year. The high-quality **external panelling** on your hot tub can be cleaned easily using a liquid domestic cleaning product. To tackle heavy soiling, you can also use a pressure washer. But make sure you observe the specified minimum distance to avoid damaging the surface. Finally, the **inner shell** can be cleaned easily using a standard all-purpose cleaner. Avoid any scratching or abrasive cleaning products. Have you found any scratches? No problem, some very fine-grained sandpaper and polish will soon make them disappear.

What do you need to do before using your hot tub for the first time?

The very first time you use your hot tub with fresh water, we recommend carrying out a **shock chlorination** to kill off bacteria and germs. Leave the pumps to run at full power for half an hour with the cover open. Then check the **water values**. The alkalinity should be between 80 and 120 for use, with the ideal reading being precisely 100. Measure the pH of the water too: this must be between 7.2 and 7.6.



Important tip:

Get into the habit of always showering before you step into your hot tub and rinse your bathing clothing too. Body lotions, deodorants, perfume or soap come off your skin and textiles and can impair the water quality.

General points to note

Checking and cleaning the water quality regularly is important to ensure complete relaxation and also for hygiene and health reasons. The more often you use your hot tub and the more people use it regularly, the more dirt accumulates. Any residue from body lotions, deodorants, perfume or soap from your skin or bathing suit can impair the water quality. Regularly adding suitable water treatment products can restore the high quality. However, in the long-term, dirt particles and dissolved fats will expose the filter system to more pollution.

Recommended cleaning intervals

We recommend replacing the water completely **three or four times a year**, depending on how intensively the hot tub is used. Before you refill it with fresh water, rinse – adding a cleaning tablet to the old water – the hot tub thoroughly once again. This will also clean the piping system. Remove the filter **every 4 to 6 weeks** and clean it using appropriate tablets. Carry out a simple filter clean **once a week** and check the water quality **two or three times** a week. For optimum water treatment, use only tested and high-quality products from your specialist dealer.

Best water filter quality

Filters are essential for keeping hot tub water clean. The filter element should be cleaned every week or when necessary as well as every **6 weeks** by soaking it in a filter bath with a filter cleaning tablet. To keep the hot tub guarantee, we recommend using only original Villeroy & Boch filter elements. Villeroy & Boch hot tubs have a dual filter system with Microban® technology that disinfects the filter medium. All of the water, including the water behind every JetPak, runs through both filter units. With programmable filter cycles, an intelligent water management system and automatic deactivation of the ozonator during use, these hot tubs offer **maximum safety, comfort and hygiene**. Only Villeroy & Boch has this filter system with a separate filter basket.



Original Villeroy & Boch filter sets

The filters have to be replaced every once in a while – the filter baskets are already integrated as standard. 2 filters are always required for the dual filter system, so it is a good ideal to also purchase a replacement filter set. This will ensure that you can still use your hot tub while you clean the first two filters. Original Villeroy & Boch filter sets have a host of important advantages compared to standard filters:

- They prevent small objects from being sucked into the piping system
- They keep children away from the suction area.
- Cleaning tablets can be placed safely under the screw-on cap.

Easy steps to optimum water quality all year round

Recommended water treatment schedule:



Once a week:

- treat the water using a special water treatment product.
- To disinfect the tub after each use, add around a level spoonful of chlorine granulate per person to the water to stop the water quality from deteriorating too quickly (lasts for several days). Chlorine products are available from specialist dealers.

Cleaning the filter

Use a spray head and a garden hose to quickly clean the filter, including between the pleats, with minimal use of water.

Every 6 weeks:

- Soak the filter in water with a cleaning tablet. We recommend a second filter set so you can alternate between the filters.

3-4 times a year:

- Empty the hot tub completely, clean and refill with fresh water.
- Before emptying, add a cleaning tablet to deep clean the piping.
- You can use a special hot tub polish to clean the inner shell.
- Clean the cover.