

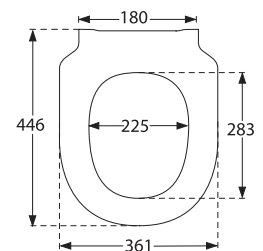
Toilet seat Subway 3.0



Model 8M42 61 Subway 3.0 toilet seat, incl. 9209 46 61 fixed hinge

Product Description Subway toilet seat in Wrap Over design made of colour ingrained duroplast with fixed hinge in stainless steel and plastic

- incl. fixed hinge in stainless steel and plastic
- centre distance: 180 mm
- load of ring seat: 240 kg
- 10 year guarantee

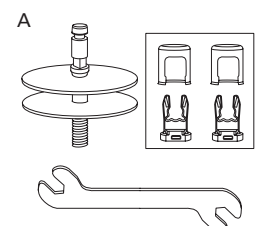


Colour Programme 01 White (Alpin)
RW Stone White

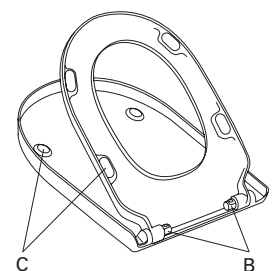
Hinge Finish 61 Stainless steel

Spare Parts

- A) 9209 46 61 fixed hinge in stainless steel
- B) 9209 49 00 Dummy Damper packet
- C) 9209 47 00 Buffers for seat and cover

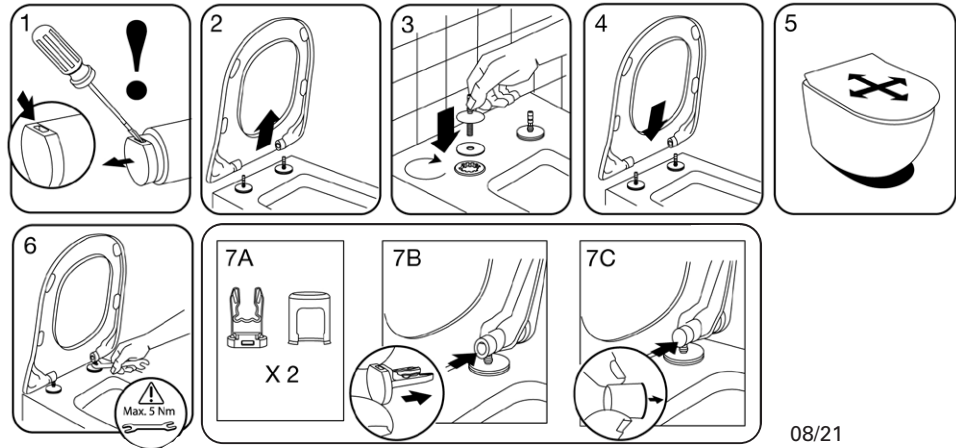


Cleaning Instructions Use a mild soap solution. Seat and hinge should not be left damp, but be dried with a soft cloth. When using abrasive, corrosive or chlorine based cleaners for the bowl, avoid contact with seat and hinge as it may lead to damages or flash rust. Therefore, when cleaning the bowl, make sure that seat and cover are in an upright position until all the cleaner has been flushed away.



Instruction manual

9209 46 61



Material Description

TOILET SEAT: The material is colour ingrained duroplast (UF A 10 = urea formaldehyde) that contains no environmentally hazardous substances. UF plastic comprises 67% urea formaldehyde resin, 28% cellulose, as well as 5% minerals, pigments, lubricants and moisture content. The raw material from the supplier contains less than 0,03% formaldehyde after a special curing process.

BUFFERS: EVA (copolymer made of ethylene and vinyl acetate).

DAMPER KIT: Hydraulic damper with stainless steel damper casing and plastic parts.
Damper liquid: Anti-friction liquid.

MOUNT/HINGE: Stainless steel and plastic.

Guarantee

The guarantee includes faults or defects in the material of our products within a periode of 10 years. Products subject to minor technical modifications and design deviations E. & O.E.