

REFERENCE PROJECTS Leibniz-Gymnasium, St. Ingbert

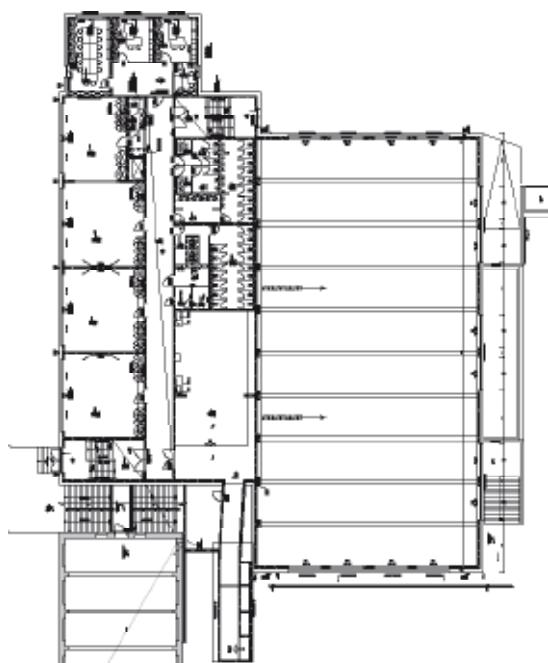


Image material and blueprint: Saarpfalz-Kreis

Public & Education

Concentration on one location

At the Leibniz Gymnasium St. Ingbert more than 700 students, teachers, employees, and parents live, learn, and work together. It is a UNESCO project school where educational objectives beyond the standard curriculum are taught and pursued. This includes concepts such as tolerance, personal commitment to human rights, openness for other cultures and accountability for the environment and the next generation.



Construction site sign

Project name:	Leibniz-Gymnasium St. Ingbert
Location:	St. Ingbert, Koelle-Karmann-Strasse
Building Owner:	Saarpfalz-Kreis
Architects:	Kreisbauamt Saarpfalz-Kreis, Plan Galerie
Energy technology:	Ingenieurbüro Kreanovus
Beginning of construction:	2011
Completion:	2013
Usable area:	3.800 m ²
including gymnasium	990 m ²
Renovated space:	25,500 m ³
Technical details:	Ventilation system, triple glazing, passive house standard
Products:	Wash basins and WCs from the Omnia Architectura and Loop&Friends series

REFERENCE PROJECTS Leibniz-Gymnasium, St. Ingbert

As a result of increasing numbers of students, two different locations into which the Leibniz Gymnasium was previously divided, and spatially and structurally outdated buildings, the school was consolidated in its current location near the city centre. A new school building was inaugurated at the end of 2013. 'The upper age groups now have ideal facilities for learning in the new building between Koelle-Karmmanstrasse and Römerstrasse,' said Headmaster Erik Brill. In the course of the reorganisation, the designers from the architectural firm Plangalerie and the Saarpfalz-Kreis district building authority envisioned extensive bathroom facilities and shower areas which were equipped with puristic sanitary products of the Omnia Architectura and Loop&Friends from Villeroy & Boch.

Compact block

The expansion comprises the school building with administrative wing and a modern sport hall. The building is arranged with a north-south orientation of the main facades. The designers divided the building into three different usage areas: The school building is a compact five-storey structure with double-loaded arrangement. The administrative wing with offset height on Römerstrasse serves as a link to the neighbouring structure on the opposite street front. On the south side is the three-area sport hall, which also serves as an assembly hall. Its flat roof serves as a favourite extended recess area of the students. The massive construction of the building partially uses the concrete walls as thermal storage mass (such as the classroom ceilings). Heat-insulated facades and windows with triple glazing offer outstanding thermal insulation and characterise the energy concept of the local engineering firm Kreanovus.

Impressive energy concept

With its good insulation, the passive building provides comfortable internal temperatures for people and electrical equipment by means of passive use of the available energy from the sun and therefore requires almost no separate heating. The room heating essentially takes place through the ventilation system, with the only exceptions being the showers, changing rooms, and the entry area on the ground floor with underfloor heating.

Sustainable and puristic design

The building's puristic design extends the entire way to the bathrooms and shower areas and is characterised by agelessness and functionality. The designers had a clear colour concept in mind – green for the boys and orange for the girls. The sanitary products for the toilets and wash basins come from the Omnia Architectura and Loop&Friends collections from Villeroy & Boch. Recessed washing basins form the Loop&Friends assortment offer comfort and modern design. The same applies for the WCs and wash basins adapted for the needs of the disabled, which were chosen from the Omnia Architectura Vita assortment.



Image material: Saarpfalz-Kreis