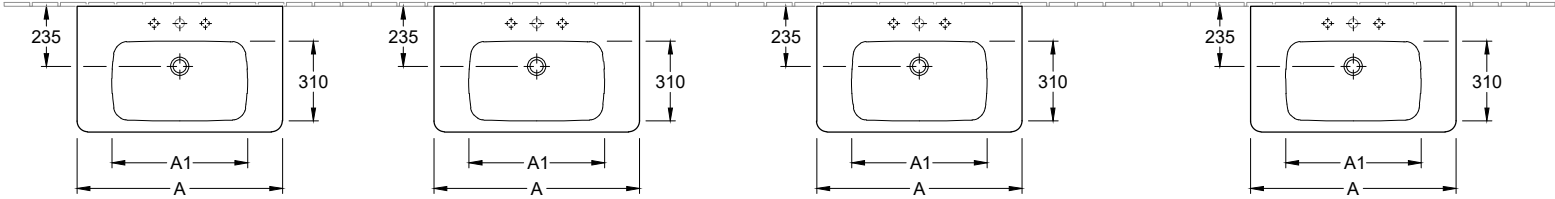
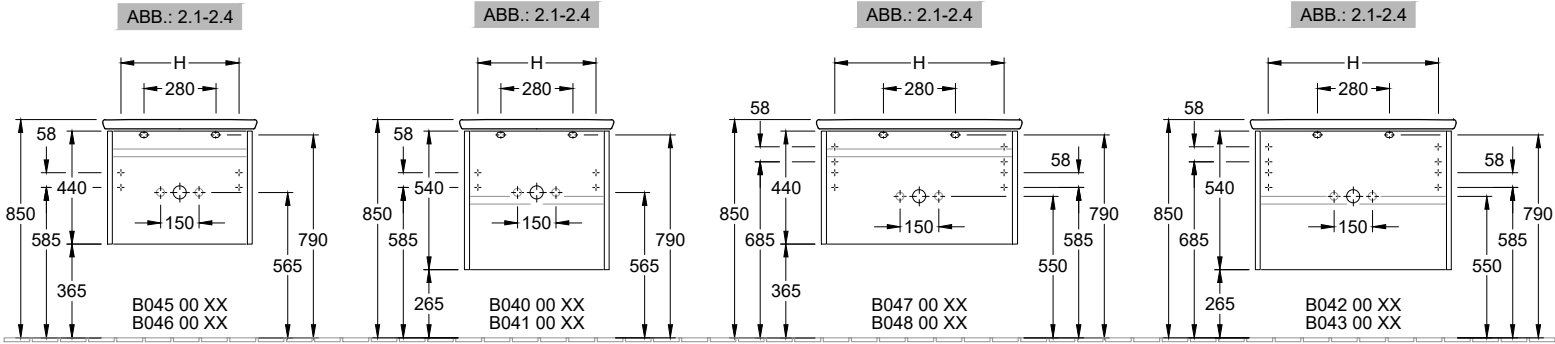


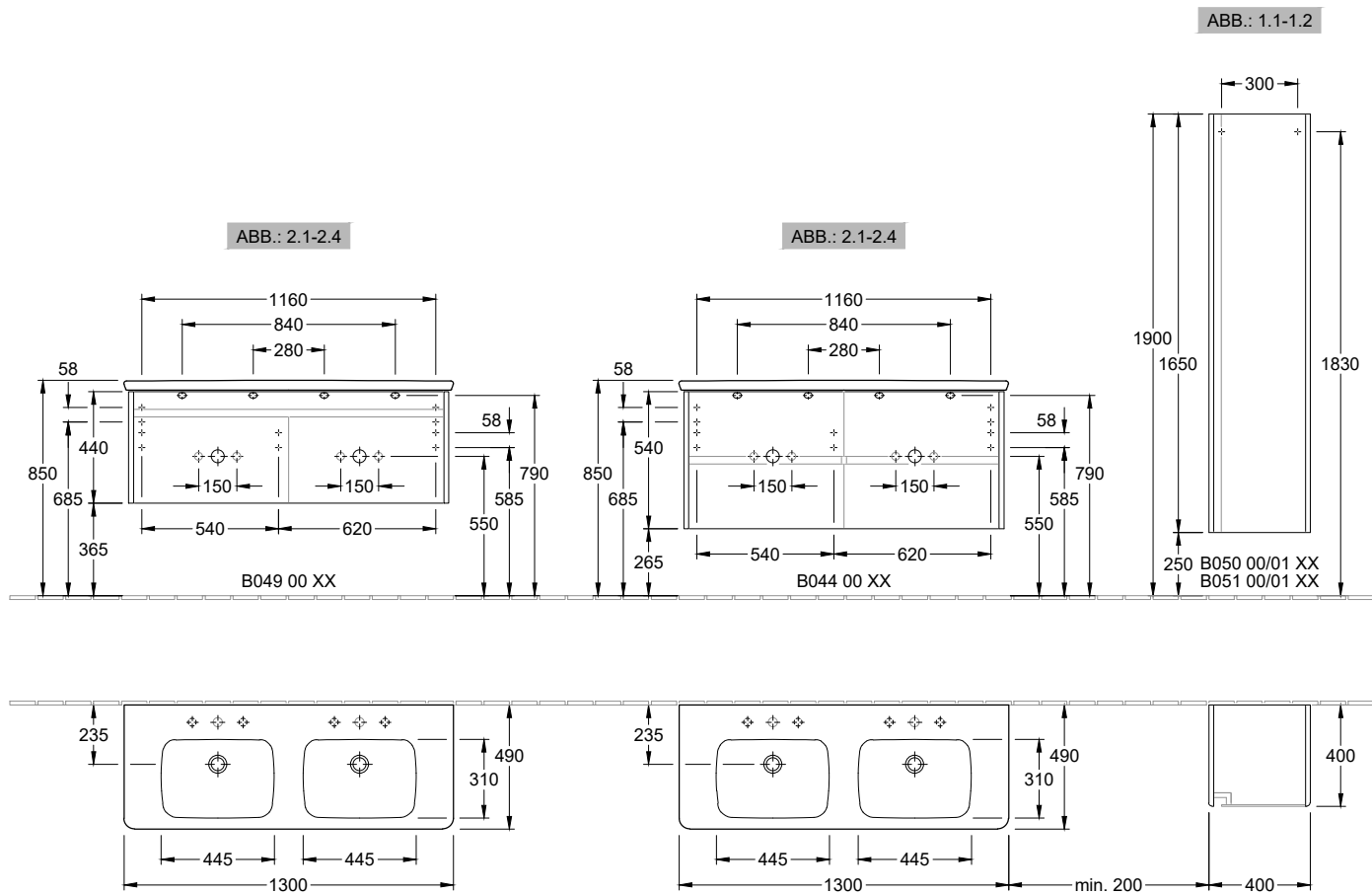
Installationsanleitung DE
Installation instructions EN-UK
Manuel d'installation FR

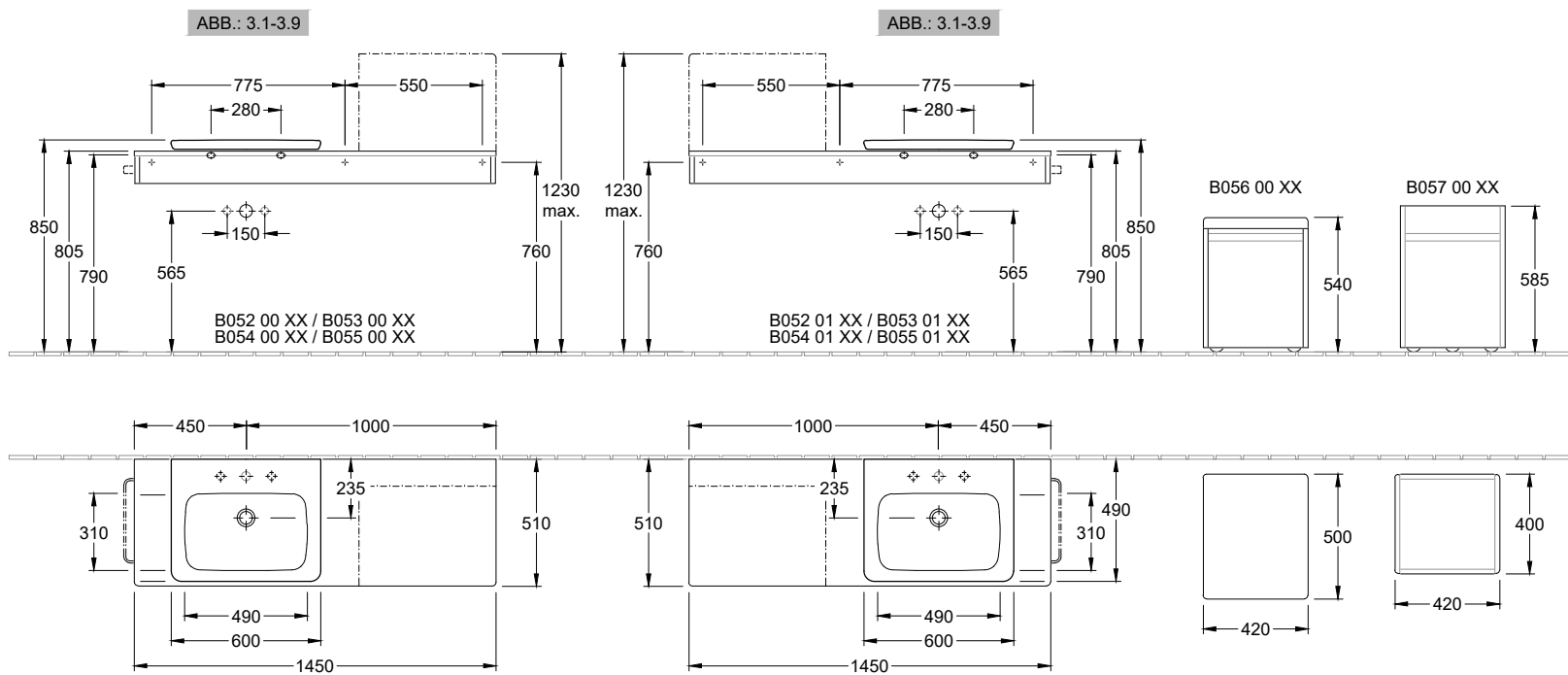


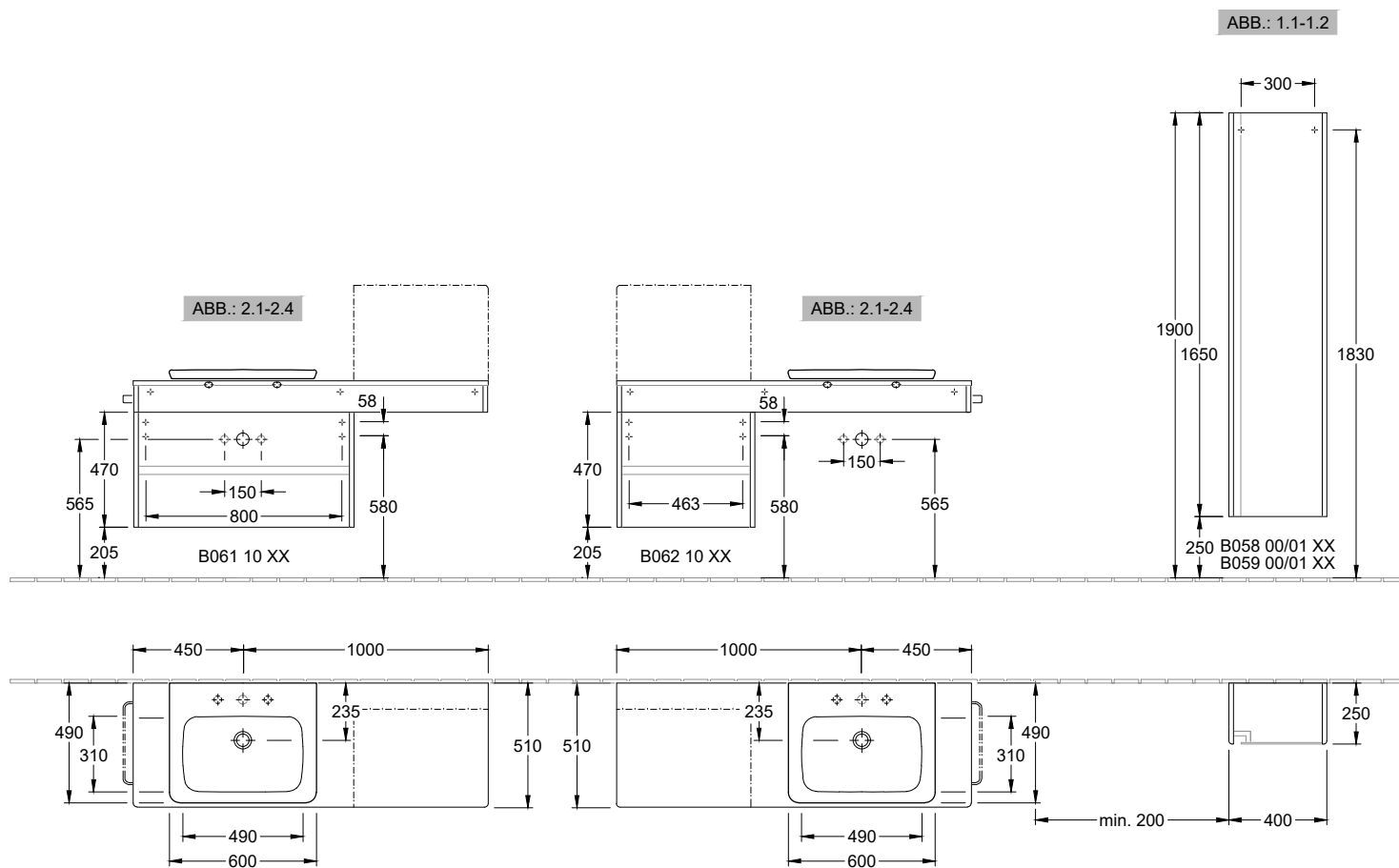
Vivia

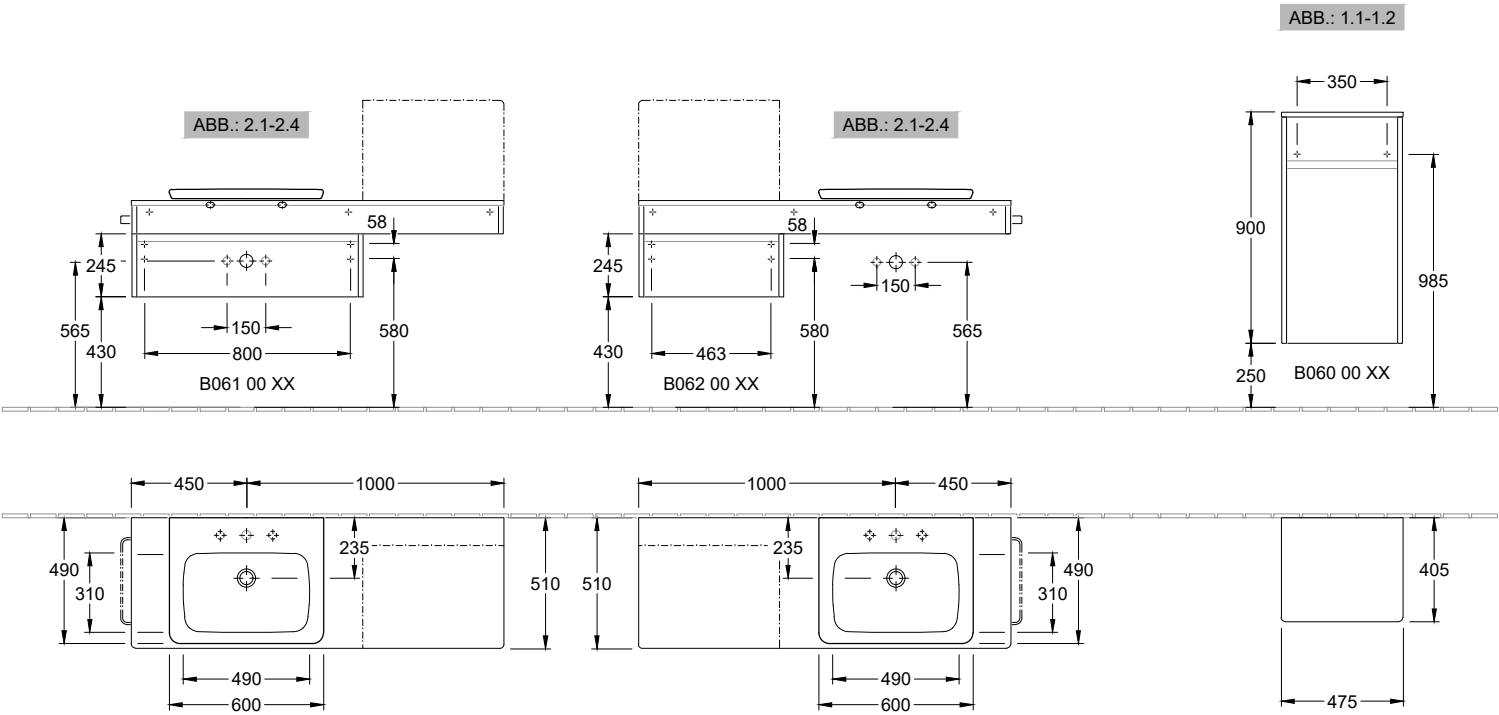


	A	A1	H
B045 00 XX / B040 00 XX	600	490	465
B046 00 XX / B041 00 XX	650	520	515
B047 00 XX / B042 00 XX	800	525	665
B048 00 XX / B043 00 XX	1000	525	865









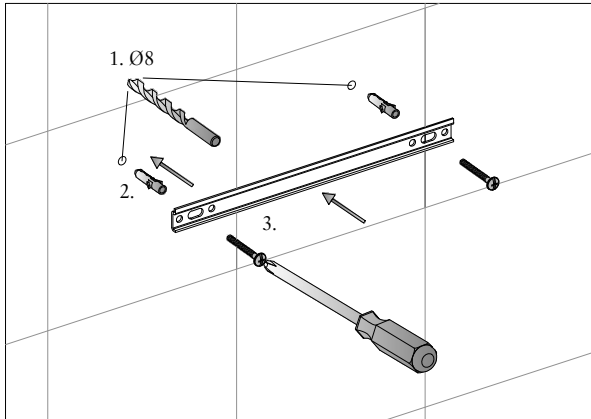


ABB.: 1.1

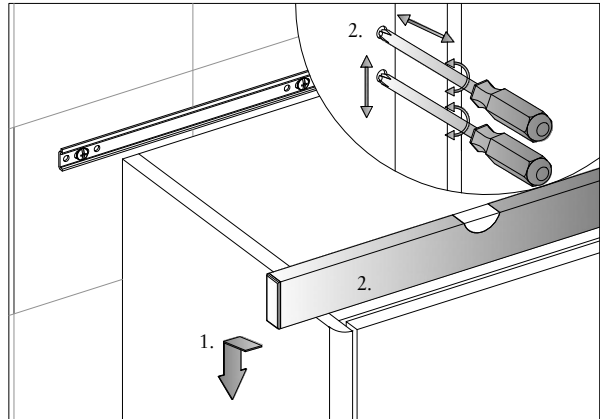


ABB.: 1.2

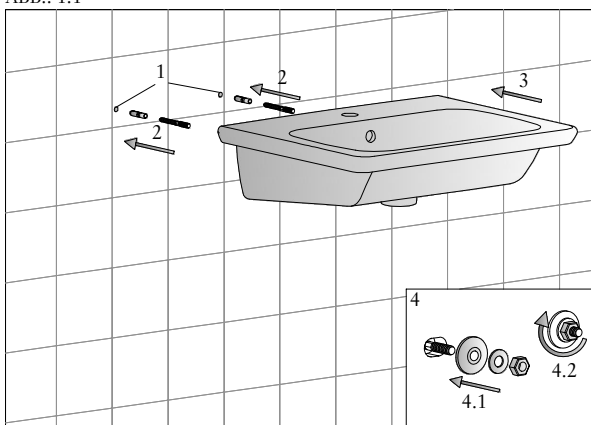


ABB.: 2.1

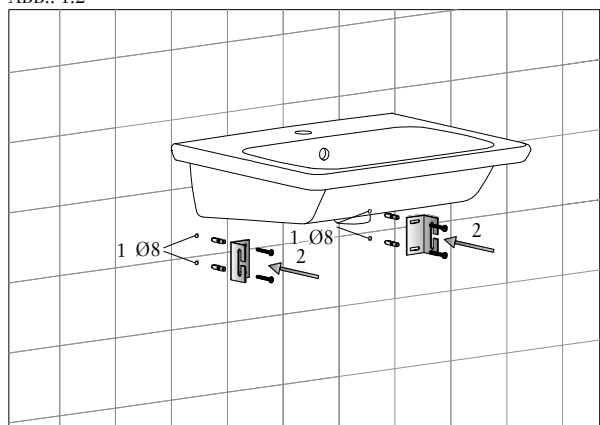


ABB.: 2.2

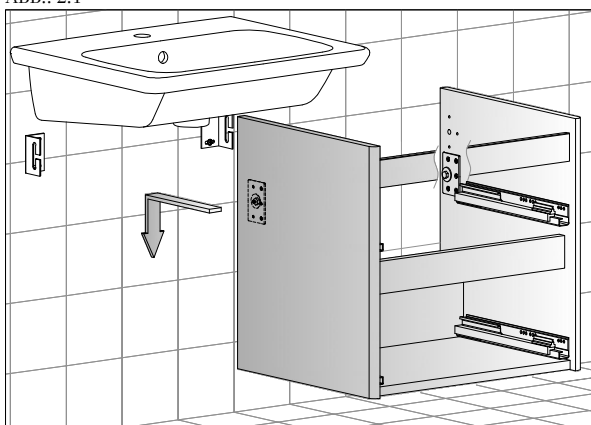


ABB.: 2.3

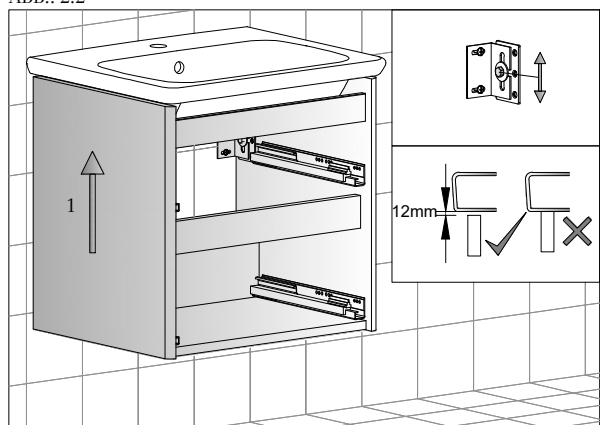


ABB.: 2.4

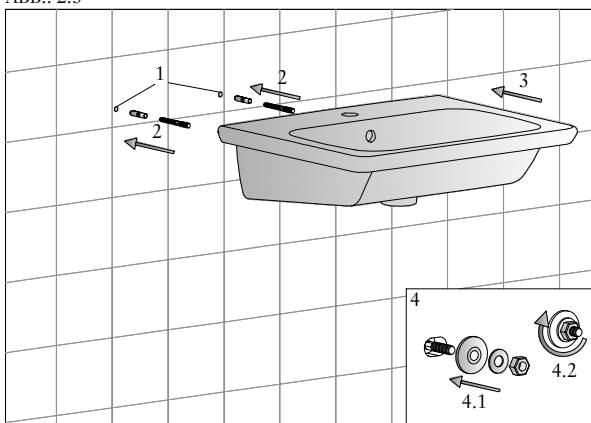


ABB.: 3.1

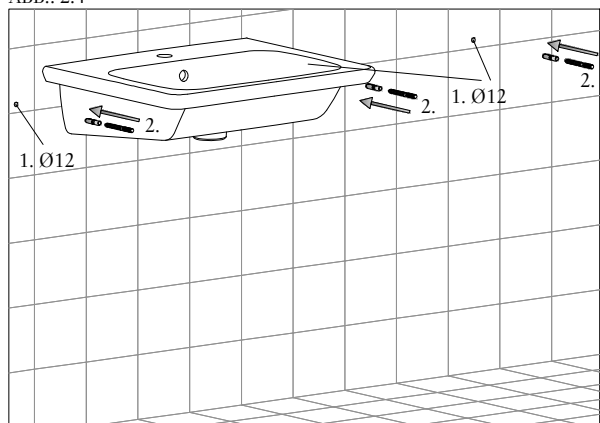


ABB.: 3.2

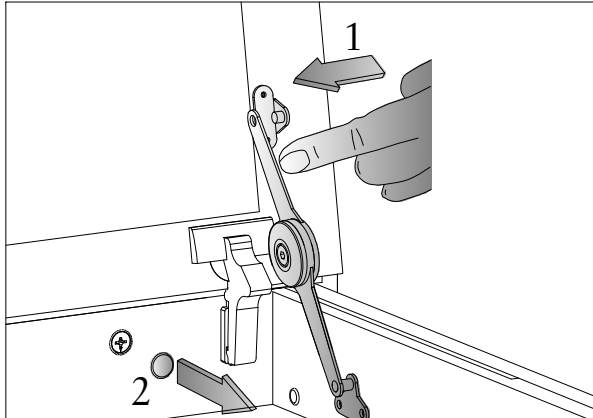


ABB.: 3.3

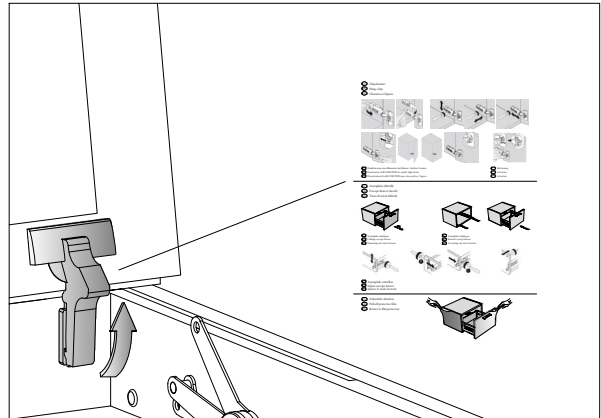


ABB.: 3.4

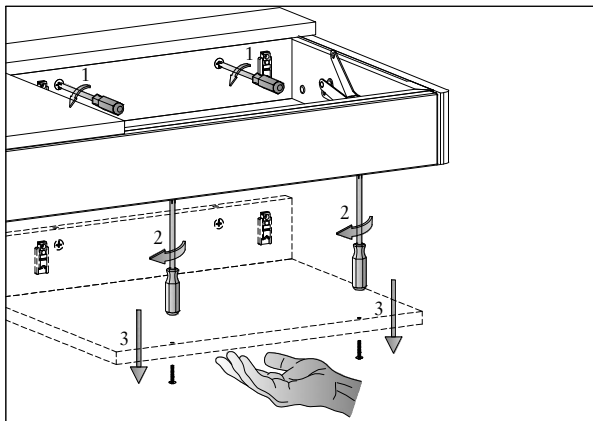


ABB.: 3.5

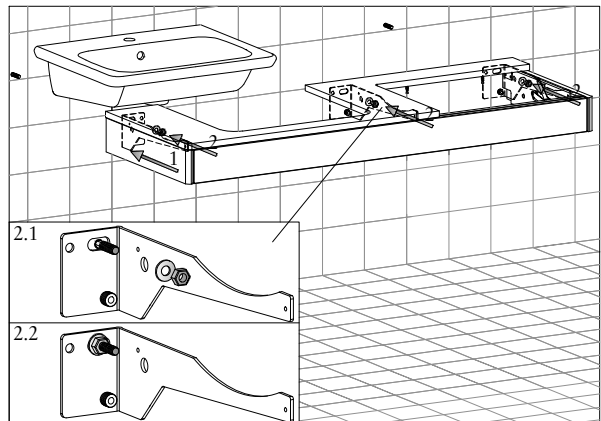


ABB.: 3.6

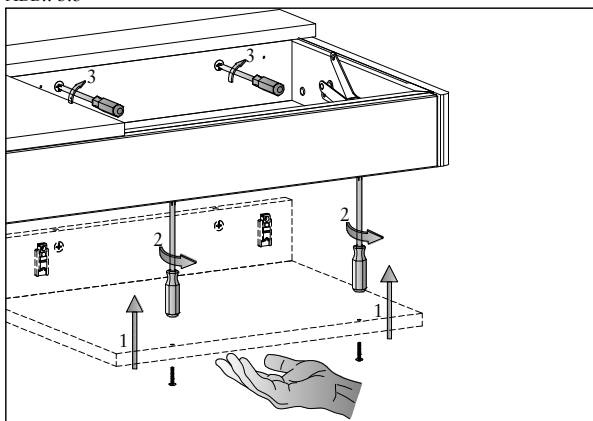


ABB.: 3.7

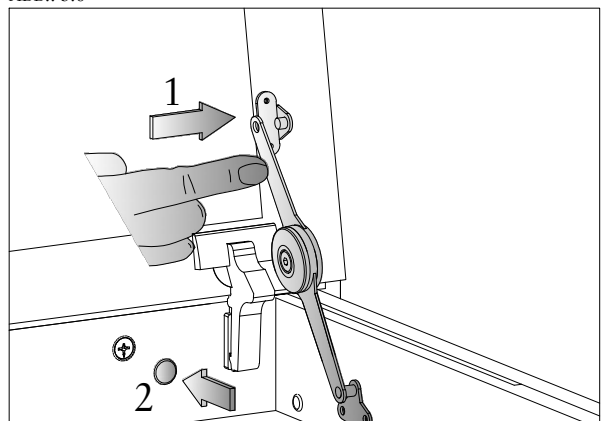


ABB.: 3.8

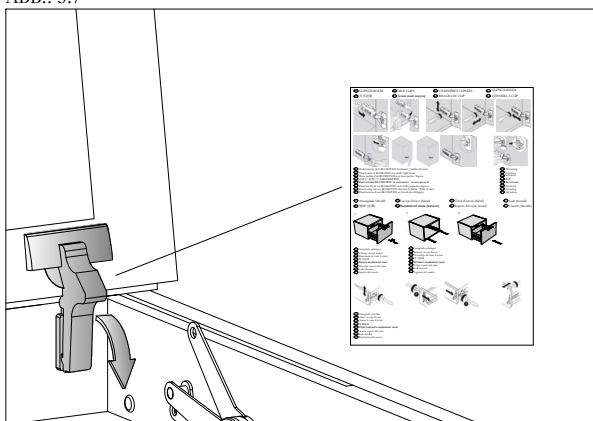
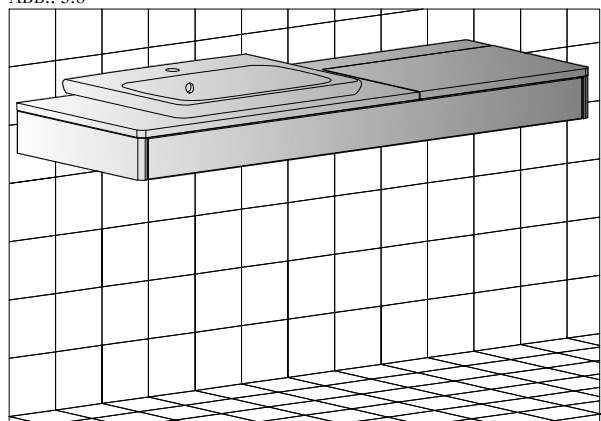
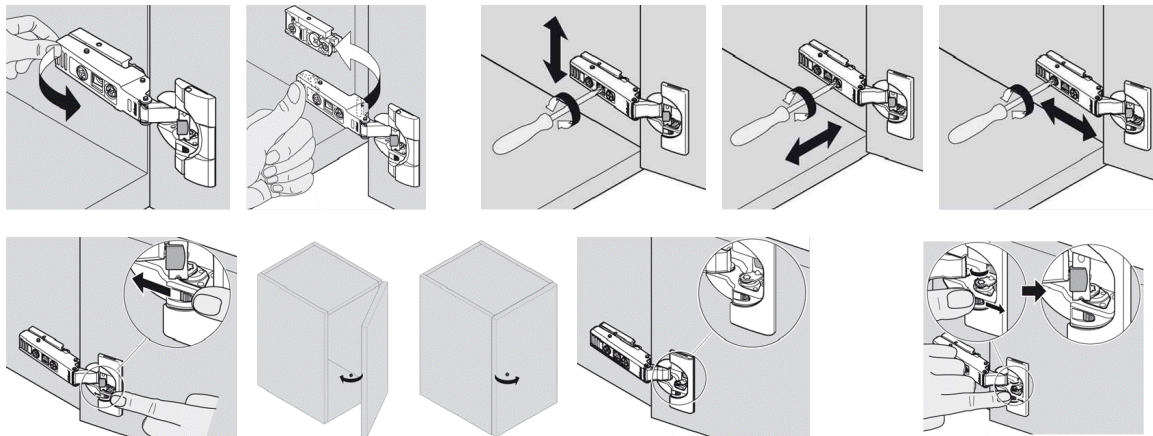


ABB.: 3.9



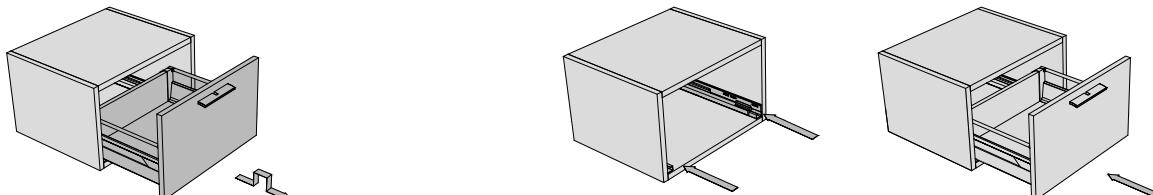
- (D) Clipscharnier
(GB) Hinge clips
(FR) Charnières Clipsées



- (D) Deaktivierung einer Blumotion bei kleinen / leichten Fronten
(GB) Deactivation of BLUMOTION for small / light fronts
(FR) Désactivation d'un BLUMOTION pour faces petites / légères

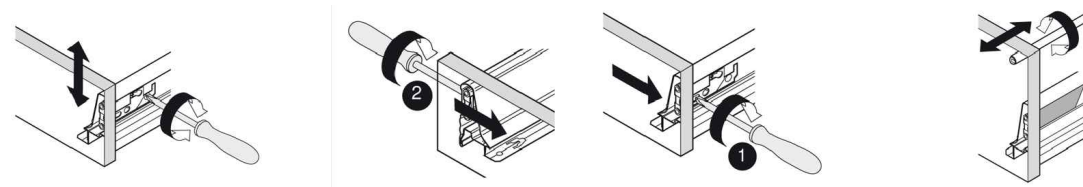
- Aktivierung
○ Activation
○ Activation

- (D) Auszuglade (Metall)
(GB) Excerpt drawer (metal)
(FR) Tiroir d'extrait (Métal)



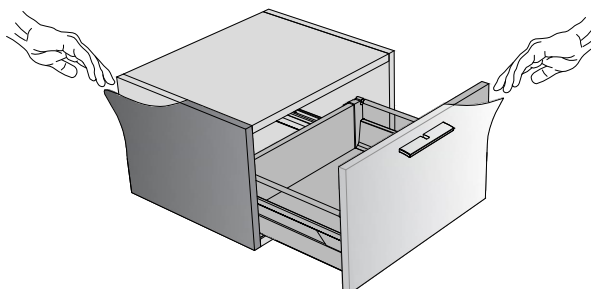
- (D) Auszuglade aushängen
(GB) Unhinge excerpt drawer
(FR) Démontage du tiroir d'extrait

- (D) Auszuglade einhängen
(GB) Reinsert excerpt drawer
(FR) Accrochage du tiroir d'extrait



- (D) Auszuglade einstellen
(GB) Adjust excerpt drawer
(FR) Ajuster le tiroir d'extrait

- (D) Schutzfolie abziehen
(GB) Pull off protective film
(FR) Retirez le film protecteur



- Ⓓ Tiefeneinstellung TIP-ON BLUMOTION
- ⒼⒷ Depth adjustment TIP-ON BLUMOTION
- ⒻⓇ Réglage en profondeur TIP-ON BLUMOTION

