

# ARCHITECTURA

- Ⓛ Montageanleitung
- ⒼⒷ Installation instructions
- ⒻⓇ Instructions de montage
- ⒸⓃ 安装说明书
- ⒺⓈ Instrucciones de instalación



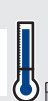
Villeroy & Boch

1748

< 1000 kPa (10 bar)

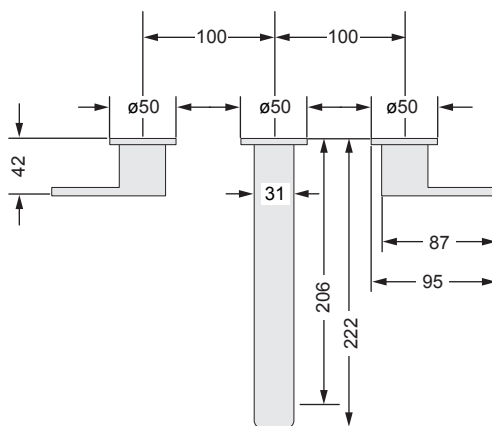
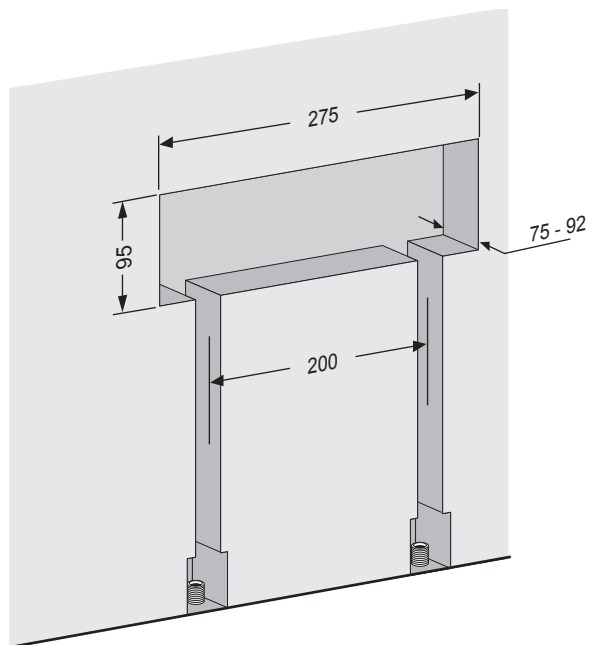


< 80°C  
< 176°F

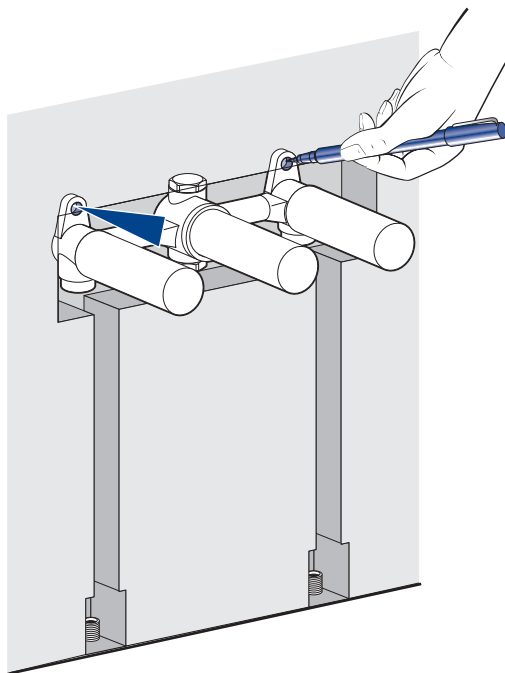


~10°C  
~50°F

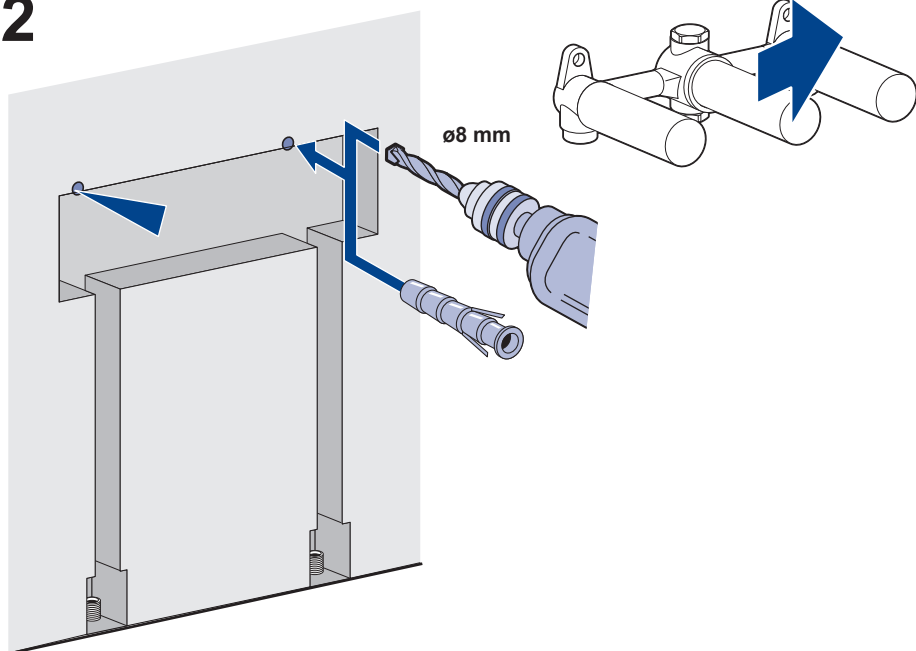
[mm]



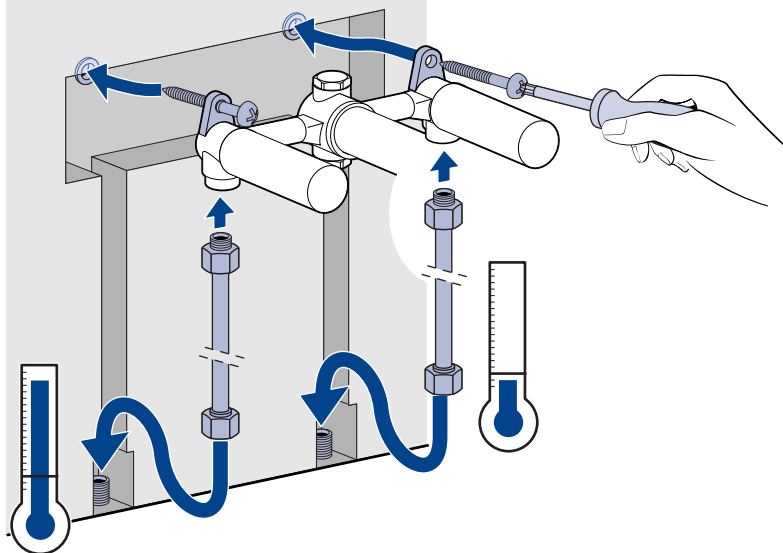
1



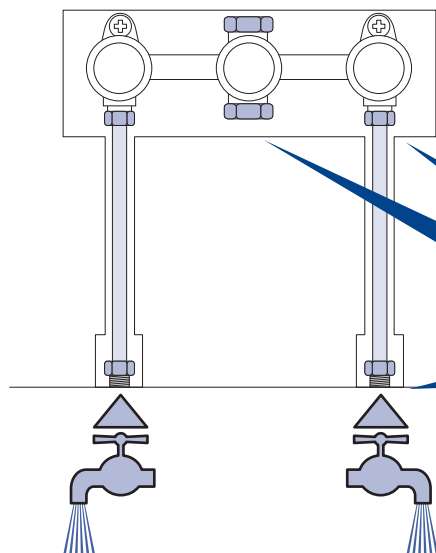
2



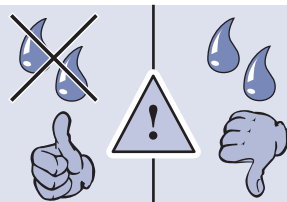
3

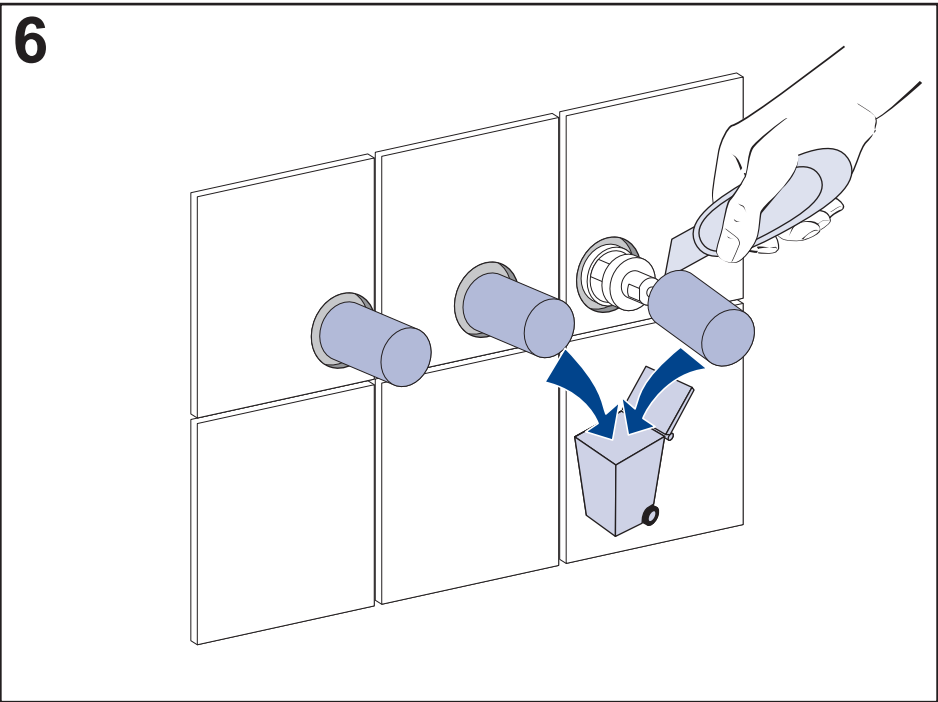
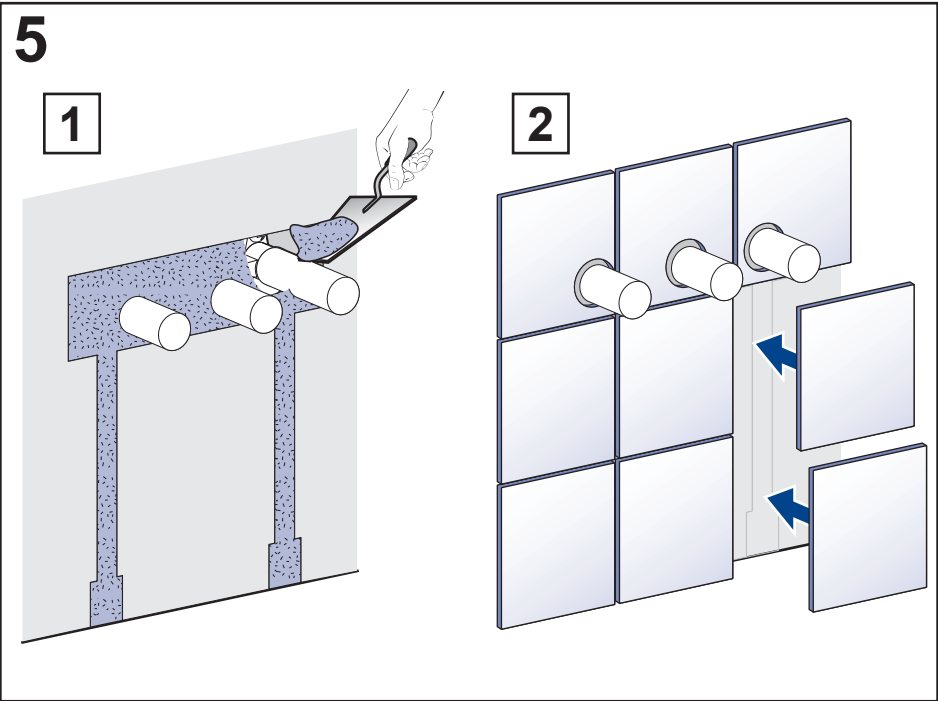


4

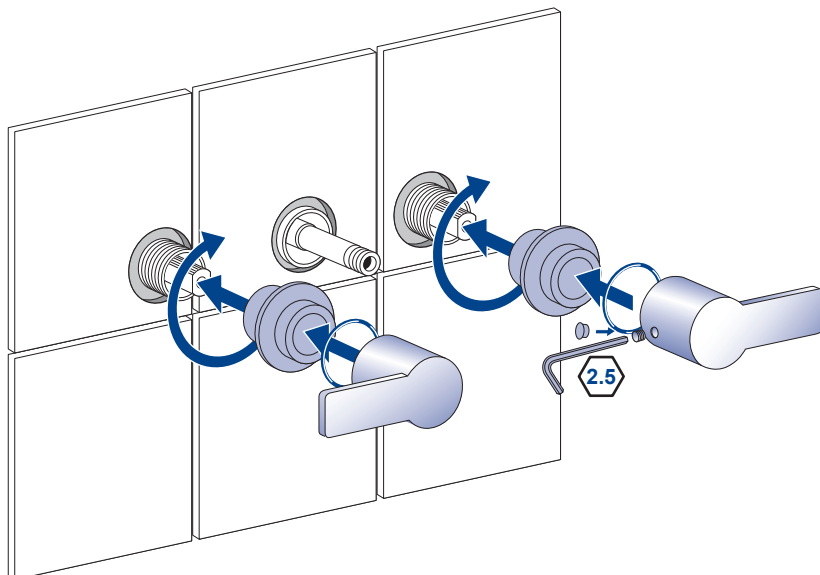


Dichtigkeitsprüfung  
Leak testing  
Les tests de fuite  
泄露检测  
Prueba de fugas

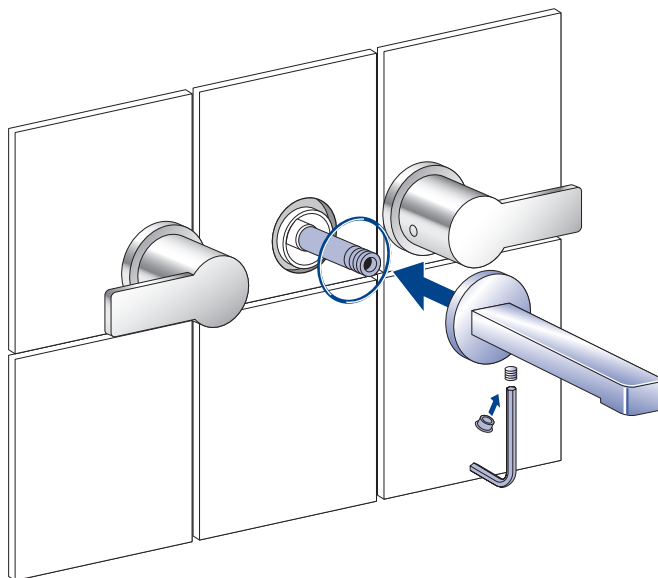


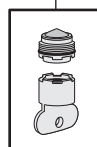
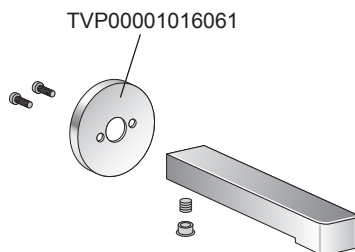
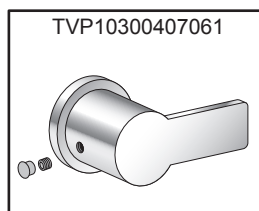
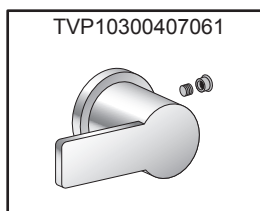
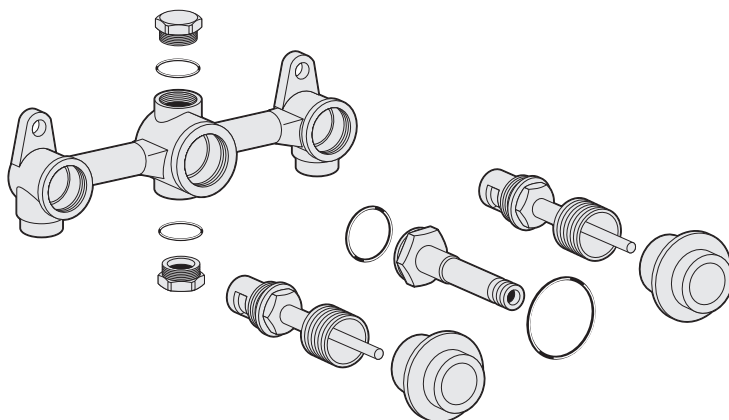


7



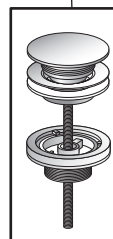
8

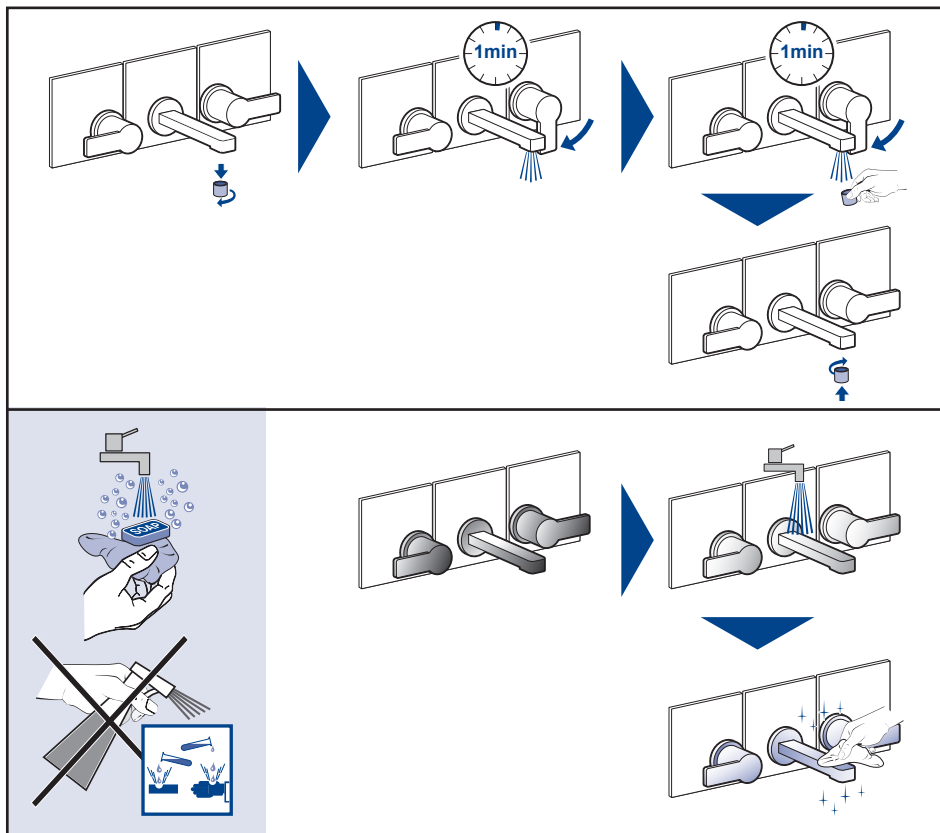




TVP00000513000

TVP00000301061





Änderungen vorbehalten

We reserve the right to make alterations

Sous réserve de modifications

我们保留作出改变的权利

Nos reservamos el derecho de hacer cambios  
o modificaciones

Controlled

  
**Villeroy & Boch**  
1748

Villeroy & Boch AG  
Postfach 12 30 - 66689 Mettlach  
Germany  
Tel: +49 (0) 6864 816000  
Fax: +49 (0) 6864 815687  
[www.villeroy-boch.com](http://www.villeroy-boch.com)

Villeroy & Boch Service centre  
Tel: 400-820-1748

TVM10300501000-V47-2015