



Toilet seat Legato Slimseat Line SC+QR

Model

9M96 S1 Legato Slimseat Line SC+QR toilet seat,
incl. 9224 74 61 top mounted fixed hinge

Product Description

Legato Slimseat Line SC+QR toilet seat in Sandwich design made
of colour ingrained duroplast with hinge in stainless steel
- incl. top mounted fixed hinge in stainless steel
- centre distance: 180 mm
- load of ring seat: 240 kg
- 10 year guarantee

Colour Programme

01 White (Alpin)

Hinge Finish

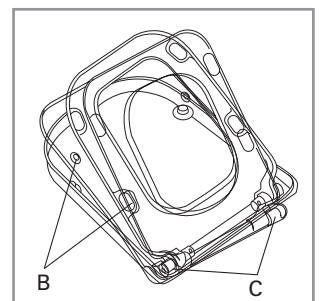
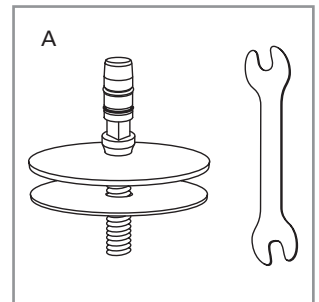
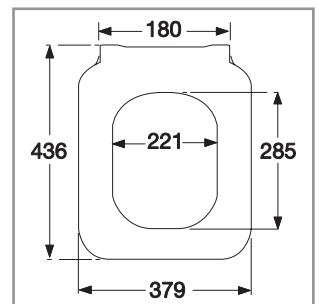
61 Stainless steel

Spare Parts

A) 9224 74 61 Top mounted fixed hinge
B) 9219 86 00 Buffers for seat and cover
C) 9224 35 00 Damper set

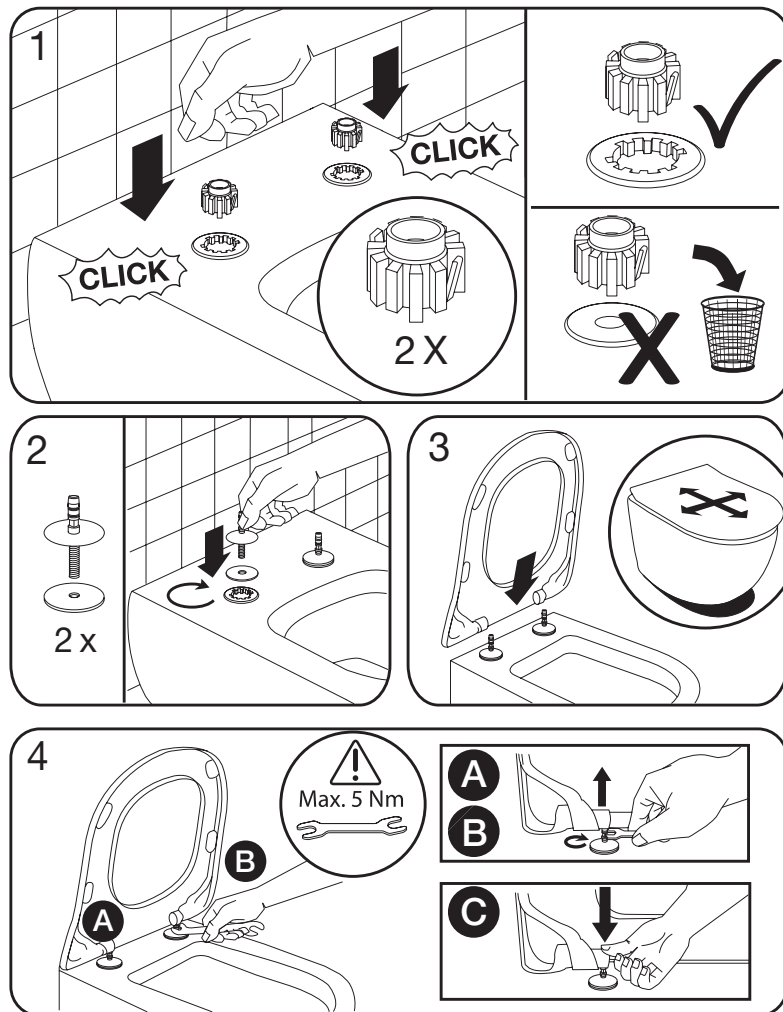
Cleaning Instructions

Use a mild soap solution. Seat and hinge should not be left
damp, but be dried with a soft cloth. When using abrasive, cor-
rosive or chlorine based cleaners for the bowl, avoid contact with
seat and hinge as it may lead to damages or flash rust. Therefore,
when cleaning the bowl, make sure that seat and cover are in an
upright position until all the cleaner has been flushed away



Villeroy & Boch
1748

9224 74 61



09/17

Material Description

TOILET SEAT: The material is colour ingrained duroplast (UF A 10 = urea formaldehyde) that contains no environmentally hazardous substances. UF plastic comprises 67% urea formaldehyde resin, 28% cellulose, as well as 5% minerals, pigments, lubricants and moisture content. The raw material from the supplier contains less than 0,03% formaldehyde after a special curing process.

BUFFERS: EVA (copolymer made of ethylene and vinyl acetate).

DAMPER KIT: Hydraulic damper with stainless steel damper casing and plastic parts.
Damper liquid: Anti-friction liquid.

MOUNT/HINGE: Stainless steel.

Guarantee

The guarantee includes faults or defects in the material of our products within a periode of 10 years. Products subject to minor technical modifications and design deviations E. & O.E.